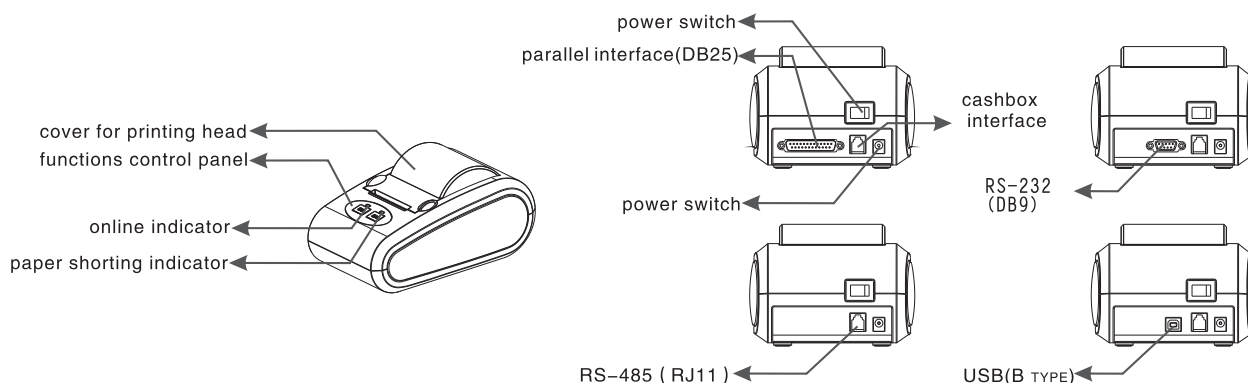


P20 thermal printer

1. Functions:

- can be combined with cash registers, bill counters, Queue machines, POS and any Thermal printing equipment instrument.
- High speed ,low voice.
- Optional Communicating ports: RS-232 (DB9)、 parallel interface(DB25)、 USB2.0(B TYPE)、 RS-485 (RJ11)

2. Parts list



3. Specifications:

●Service environment

Ambient temperature:0℃-40℃ Relative humidity:20%-80% Mechanicalness noise:≤60dB(MAX)

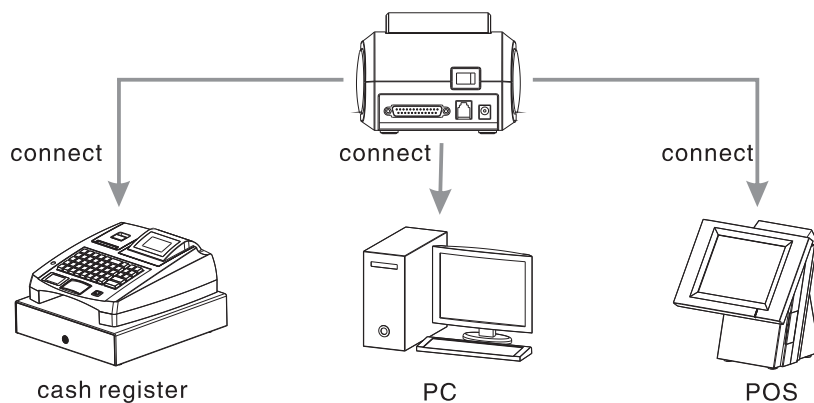
●The main qualifications

Printing method: thermal Printing width: 58mm Printing speed: 90mm/s Printing distance: ≥50KM

Manual cutting paper N.W.: 0.8kg G.W.: 1.4kg Power supply: DC8V 3A Power consumption: ≤25W

4. Device connection

①Flat machine on the desktop → ②input thermal printing paper → ③connect external power into the power input → ④connect the communication interface with the device → ⑤input power into the AC220/AC110→ ⑥Turn on the power switch, then



5. Setting

●Testing mode:

Press "Paperfeed" key after put the paper , than turn on the printer , the printer will print a testing page .

Printer Manual

●Button statement

“online” button: when the indicating light is on, the machine can receive and print the data, or the machine can not handle data . Press “online” button for function switching.

“paperfeed ” button : press it to feed printing paper .

●indicating light:

“paperfeed” key can used as error indicating light.

When having problem of feeding paper, the light will shining :

Shining 2 times : do not recognize a printer.

Shining 3 times : lack of paper.

Shining 5 times: the printing head is too hot

●the baud rate setting

This setting ways only suits printers which own communication interface DB9, USB2.0, RS-485(RJ11).

Press “online” , meanwhile, start up model, it can print the present baud rate. Press “paperfeed” can change the baud rate, when print out the demand baud rate, just open the model, then start up again.

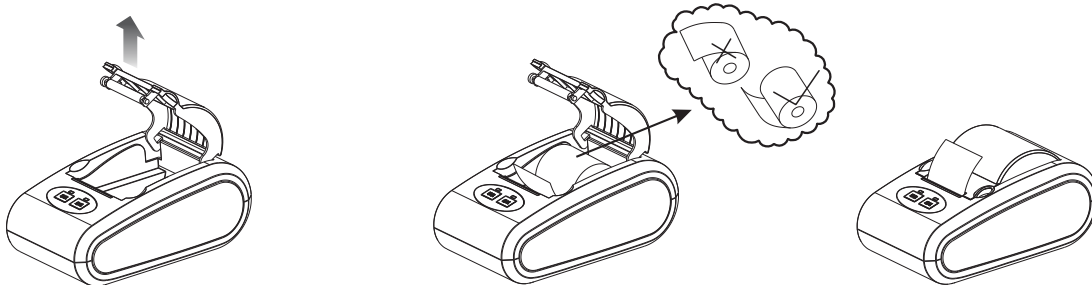
The selectable baud rate is 9600、19200、38400、57600、115200、230400

If printers use should be call system driver, the recommended baud rate of communication interface DB9 is 115200; the recommended baud rate of communication interface USB2.0 is 230400.

●Driver Installation

Pls refer to drive installation methods from CD-ROM; communication interface RS-485 (RJ11) needn't driver installation.

6. Install the paper



1.pull the cover as the arrowhead show;

2.place the paper

3.leave some paper out and close the cover.

7. Trouble shorting

①.when the voice of the printer is abnormal or paper feeding abnormally , you should stop printing immediately and place the paper in the normal position.

②.if there have empty blank in the receipt, the printing head should be damaged ,you should replace the printing head.

③.if the receipt is blurry, you should clean the dirty on the printing head, power off and clean the printing head by cotton with alcohol. as the right picture.

8. maintains

①.power off when you connect or disconnect the communicating lines .

②.Please clean the eyewinker on the printing head in time ;

③.Don't keeping printing paper when no paper feeding .

