

Driver Installation Guide

Revision 1.0.2.0

Fujitsu Isotec Limited



1	Introduction	3
1.1	History.....	3
1.2	Related Documents.....	3
1.3	Trademarks.....	3
1.4	Overview	3
1.5	Operating Environment.....	4
1.6	Setup Disk.....	6
2	About Installation	7
2.1	Installing Windows Driver.....	9
2.1.1	Using Installer to Install the Driver.....	9
2.1.2	Installing to 64 Bit Operation System	16
2.1.3	Checking Installation	17
2.1.4	When the Test Page Cannot Be Printed	19
2.2	Installing the OPOS Driver.....	23
2.2.1	Using Installer to Install the Driver.....	23
2.2.2	Installing to 64 Bit Operation System	29
2.2.3	Checking Installation	31
2.2.4	Checking Manufacturer's Serial Number	32
3	Uninstalling Windows Driver	33
3.1	For Windows 8 / Windows Server 2012.....	33
3.2	For Windows 7	34
3.3	For Windows Server 2008 R2	35
3.4	For Windows Vista.....	36
3.5	For Windows Server 2008.....	37
3.6	For Other Operating System.....	38
4	Uninstalling the OPOS Driver	39
4.1	For 32 Bit Operating System	39
4.2	For 64 Bit Operating System	40
5	Utility	41
5.1	Overview	41
5.2	Installation	41
5.3	Starting Up.....	41
5.4	Un-installation.....	41

1 Introduction

1.1 History

01, 2008	Revision 1.0.0.0
07, 2013	Revision 1.0.2.0

1.2 Related Documents

- 1) Application Programmer's Guide of OPOS-OCX Driver
- 2) Windows Driver "readme.txt"

1.3 Trademarks

The company and product names in this document may be trademarks or registered trademarks of their respective companies.

1.4 Overview

This document describes about installation of the OPOS Driver and Windows Driver.

1.5 Operating Environment

This printer driver works with the operating systems as follows:

Microsoft(R) Windows(R) 2000

Microsoft(R) Windows(R) XP Professional

Microsoft(R) Windows(R) XP Home Edition

Microsoft(R) Windows Server(R) 2003, Enterprise Edition

Microsoft(R) Windows Server(R) 2003, Standard Edition

Microsoft(R) Windows Embedded for Point of Service

Microsoft(R) Windows Vista(R) Enterprise

Microsoft(R) Windows Vista(R) Business

Microsoft(R) Windows Vista(R) Ultimate

Microsoft(R) Windows Vista(R) Home Premium

Microsoft(R) Windows Vista(R) Home Basic

Microsoft(R) Windows(R) 7 Ultimate

Microsoft(R) Windows(R) 7 Enterprise

Microsoft(R) Windows(R) 7 Professional

Microsoft(R) Windows(R) 7 Home Premium

Microsoft(R) Windows(R) 7 Starter

(*1) Microsoft(R) Windows(R) 8 Enterprise

(*1) Microsoft(R) Windows(R) 8 Pro

(*1) Microsoft(R) Windows(R) 8

Microsoft(R) Windows Server(R) 2008 Enterprise Edition

Microsoft(R) Windows Server(R) 2008 Standard Edition

Microsoft(R) Windows Server(R) 2008 R2 Enterprise Edition

Microsoft(R) Windows Server(R) 2008 R2 Standard Edition

(*1) Microsoft(R) Windows Server(R) 2012 Essentials

(*1) Microsoft(R) Windows Server(R) 2012 Standard

(*1) FP-460 Driver and FP-360 Driver are not supported.

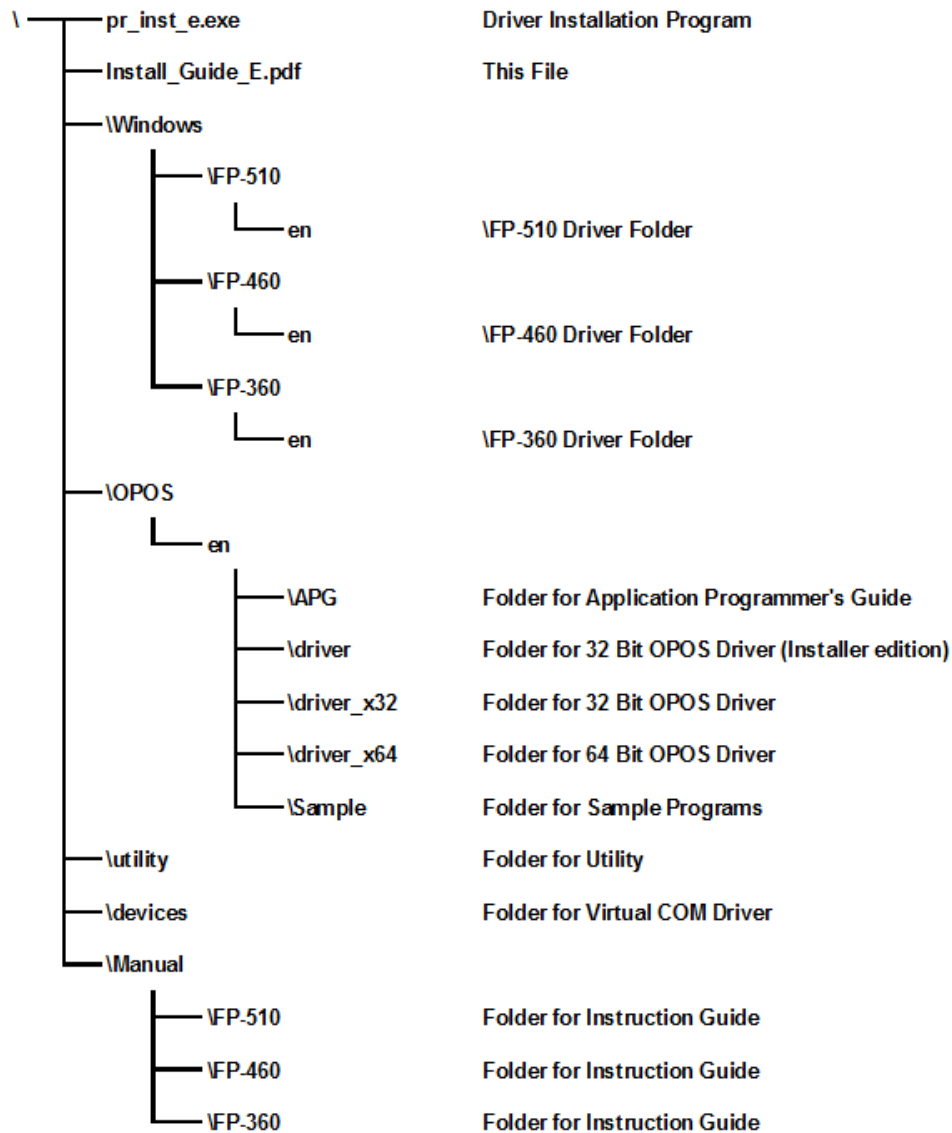
The 64 Bit Windows Operating System is also supported. However, since the installer for the drivers does not support the 64 Bit Windows Operating System, follow the installation steps described in this document to install the drivers.

In this guide, the following abbreviations are used for the products.

- Microsoft(R) Windows(R) 2000 Professional,
Microsoft(R) Windows(R) 2000 Server
 -> Windows 2000
- Microsoft(R) Windows(R) XP Home Edition,
Microsoft(R) Windows(R) XP Professional
 -> Windows XP
- Microsoft(R) Windows Server(R) 2003, Enterprise Edition,
Microsoft(R) Windows Server(R) 2003, Standard Edition
 -> Windows Server 2003
- Microsoft(R) Windows Embedded for Point of Service
 -> WEPOS
- Microsoft(R) Windows Vista(R) Enterprise,
Microsoft(R) Windows Vista(R) Business,
Microsoft(R) Windows Vista(R) Ultimate,
Microsoft(R) Windows Vista(R) Home Premium,
Microsoft(R) Windows Vista(R) Home Basic,
 -> Windows Vista
- Microsoft(R) Windows(R) 7 Ultimate,
Microsoft(R) Windows(R) 7 Enterprise,
Microsoft(R) Windows (R) 7 Professional,
Microsoft(R) Windows (R) 7 Home Premium,
Microsoft(R) Windows (R) 7 Starter,
 -> Windows 7
- Microsoft(R) Windows(R) 8 Enterprise
Microsoft(R) Windows(R) 8 Pro
Microsoft(R) Windows(R) 8
 -> Windows 8
- Microsoft(R) Windows Server(R) 2008 Enterprise Edition,
Microsoft(R) Windows Server(R) 2008 Standard Edition,
 -> Windows Server 2008
- Microsoft(R) Windows Server(R) 2008 R2 Enterprise Edition,
Microsoft(R) Windows Server(R) 2008 R2 Standard Edition,
 -> Windows Server 2008 R2
- Microsoft(R) Windows Server(R) 2012 Essentials
Microsoft(R) Windows Server(R) 2012 Standard
 -> Windows Server 2012

1.6 Setup Disk

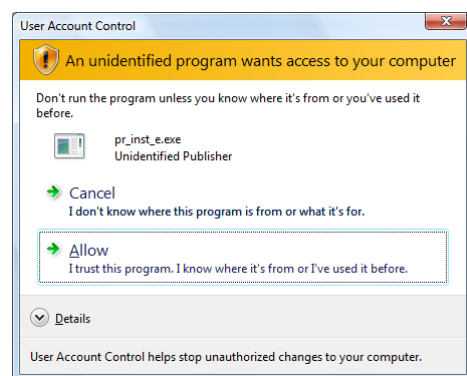
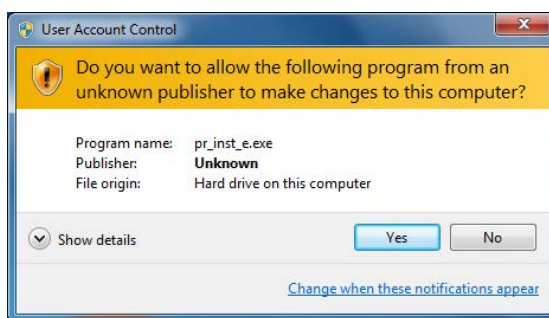
The structure of the Setup Disk consists of the following contents:



2 About Installation

a) Notes on Installation:

- On installing the drivers, make sure to log in using the account with the Administrator privilege.
- When the [User Account Control] dialog box is displayed,
[Windows 7 / Windows 8]
click [Yes]
[Windows Vista / Windows Server 2008]
click [Allow].



b) Starting the Installer

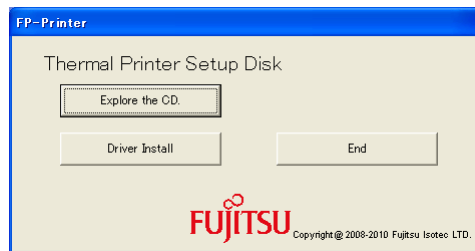
Insert the Setup Disk to display the menu screen.

If the menu screen is not displayed, execute "pr_inst_e.exe" from the Disk.

For Windows 8* / Windows 7 / Windows Vista / Windows Server 2008

* FP-460 Driver and FP-360 Driver are not supported.

- When the [AutoPlay] dialog box is displayed, click [Run pr_inst_e.exe].



- If you click [Refer to a CD], Explorer is displayed and you can view the folders in the CD drive.
- Click [Driver Install] to display the driver install screen.
- Two different kinds of drivers are included in the Disk. For details of how to install the drivers, refer to the following sections respectively.
 - Windows Driver: "2.1 Installing Windows Driver"
 - OPOS Driver: "2.2 Installing OPOS Driver"
- Click [End] to exit.

Additional Information

- About Windows Driver

It is a printer driver designed to print from the Windows application (such as Word and Excel).

Major Features: Prints the two-dimensional bar codes and various bar codes.

Supports custom paper and prints on various types of paper.

Prints on the paper for 2-color printing.

Drawer opening features.

For details of each feature, refer to the Driver Help.

- About OPOS Driver

It is the driver for the developers who work with the POS system conforming to the specifications of OLE POS Technology Council.

For details, refer to Application Programmer's Guide of OPOS-OCX Driver.

2.1 Installing Windows Driver

2.1.1 Using Installer to Install the Driver

The installer does not support the 64 Bit Windows Operating System.

To install the driver on the 64 Bit Windows Operating System, refer to 2.1.2 "Installing on 64 Bit Operating System".

《For LAN environment》

- On using LAN environment, installation of the print client software 「PR-PortManager」 is required.
- If there is some virus protection software on PC, the setup may not be completed because the printer cannot be detected.

In this case, close the setup first.

After that, add "Quick Setup", "AdminManager" and "PR-PortManager" to the exception program in Firewall of Virus protection software or disable Firewall temporarily, and then set up once again.

Steps :

- ① Install this printer driver before installing the 「PR-PortManager」. Select a dummy port such as 「LPT1:」 under 「Printer Port」 to install the printer driver.
- ② Assign a port for the printer driver to install the 「PR-PortManager」.

* For the detailed way to install and to use the 「PR-PortManager」, refer to the **PRINTER LAN CARD ONLINE MANUAL**.

- On using LAN environment, go to [Port] in Printer Properties and uncheck the [Enable interactive support] check box

a) Before Installation:

- Set the Roll Paper in the Printer.
- Ensure that the top cover is closed.
- Ensure that the interface cable is connected correctly.

Make sure to check the above mentioned before to turn on the power of the printer.

If the FIT FP-510 , 460 or 360 Printer Driver is set upped already, delete it and set up the installer.

For steps how to delete the driver, refer to the 「3 Uninstalling Windows Driver」.

- When "Found New Hardware Wizard" is displayed:

For USB interface connection, the computer may detect new hardware automatically when the power of the printer is turned on. Follow the steps below to handle this situation.

For Windows 8 / Windows Server 2012

- 1) "Device Setup" in the task bar is displayed, but no operation is required.

For Windows 7 / Windows Vista / Windows Server 2008 R2 / Windows Server 2008

- 1) A balloon message "Installing device driver software." is displayed (right bottom). No operation is required.
- 2) When the message is changed to "Your devices are ready to use.", the wizard automatically exits.
- 3) If you click the balloon message, the message [No Printer Attached.] is displayed. You can ignore the message. Click [Close].
- 4) Proceed to the next procedure, "b) Installation Steps".

For Windows XP / WEPOS

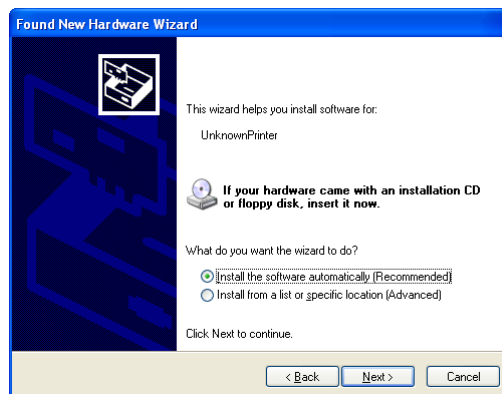
- 1) The balloon message "Found New Hardware" is displayed (right bottom), but the wizard automatically exits. When the message disappears, proceed to the next procedure, "b) Installation Steps".

For Windows Server 2003 (or Windows XP)

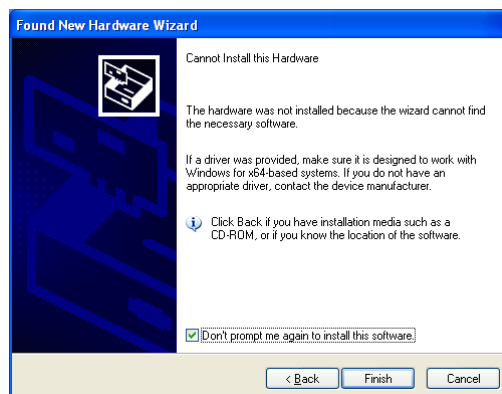
- 1) Select the "No, not this time" check box, and then click [Next].



- 2) Select the "Install the software automatically" check box, and then click [Next].



- 3) Select the "Don't prompt me again to install this software." check box, and then click [Finish].

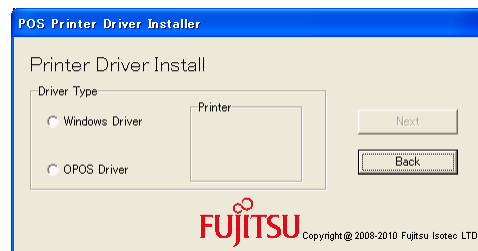


- 4) The message "Cannot Install this Hardware" is displayed. You can ignore the message. The wizard will be closed. Proceed to the next procedure, "b) Installation Steps".

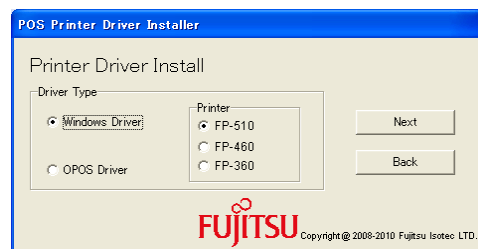
For Windows 2000

- 1) The message "Found New Hardware" is displayed in the center of the screen, but the wizard automatically exits. When the message disappears, proceed to the next procedure, "b) Installation Steps".

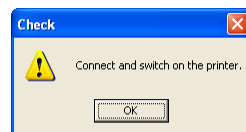
b) Installation Steps:



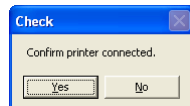
- 1) Under [Driver Type], select the [Windows Driver] check box, select the [Printer], and then click [Next].



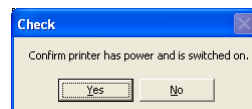
- 2) Connect the printer and interface you intend to use, turn the power of the printer, and then click [OK].



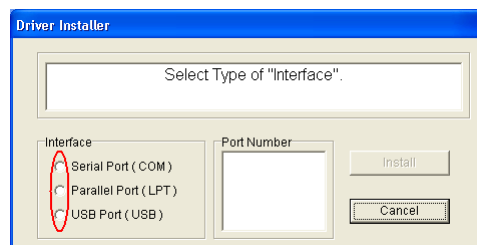
- 3) Check the connection with the printer and click [Yes].



- 4) Check the power of the printer is turned on and click [Yes].

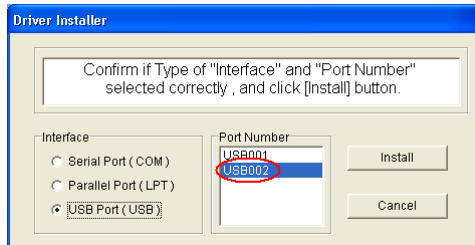


- 5) Select the check box of interface connected.



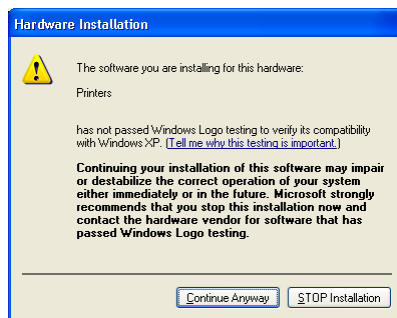
- 6) When the correct port number is displayed, click [Install]. The installer starts installation. (In general, it is recommended to install the driver without changing the port number.)

* The following example show when USB interface is connected.



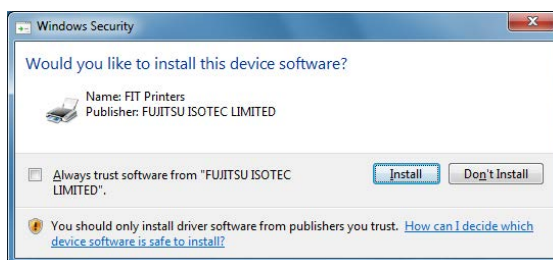
The following dialog box may appear during installation. Perform the following procedure.

For Windows XP/Windows Server 2003/WEPOS



Click [Continue Anyway].

For Windows 8 / Windows 7 / Windows Vista / Windows Server 2008

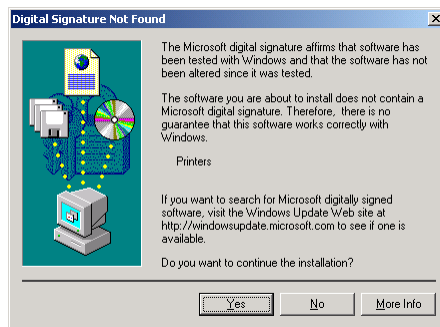


Or



Click [Install this driver software anyway].

For Windows 2000



Click [Yes].

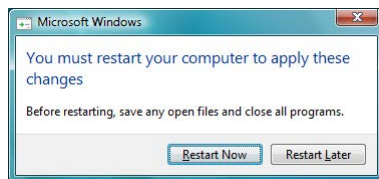
7) After a while, the following message appears. Click [OK].



8) Restart the computer.

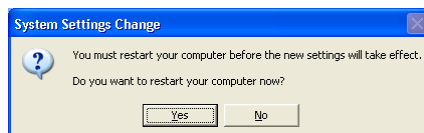
For Windows 8 / Windows 7 / Windows Vista / Windows Server 2008

- Click [Restart Now] to restart the computer.



For Windows XP/Windows Server 2003/2000/WEPOS

- Click [Yes] to restart the computer.



9) Installation is complete.

* To check the result of installation, follow the procedure described in "2.1.3 Checking Installation".

After driver is installed, assign a port for the printer driver by "PR-PortManager" for using printer in LAN environment.

For the detailed way to install and to use the 「PR-PortManager」, refer to the ONLINE MANUAL "CHAPTER3 USING THE LAN CARD IN A WINDOWS 2000/XP/VISTA/7/8/WINDOWS SERVER 2003/2008/2008 R2/2012/WEPOS ENVIRONMENT" for the PRINTER LAN CARD.

2.1.2 Installing to 64 Bit Operation System

a) Before Installation:

Read "a) Before Installation:" in "2.1.1 Installation Using the Installer".

b) Installation Steps:

- Driver Folder: Windows\FP-xxx\en
- Use "Add Printer Wizard" for installation.
- For details of installation, refer to "Readme.txt" included in each driver folder.
- * To check the result of installation, follow the procedure described in "2.1.3 Checking Installation".
- * "FP-xxx" is the model name of a printer.

2.1.3 Checking Installation


Follow the procedure below to display the [Printer] or [Printers and Faxes] dialog box.

* "FP-xxx" is the model name of a printer.

For Windows 8 / Windows Server 2012

- Press the Windows logo key + X key, shortcut menu is displayed bottom left of the screen.
- Click [Control Panel] -> [Hardware and Sound] -> [Devices and Printers].


For Windows 7

- Click the button indicated with the Windows logo  at the left bottom of the desktop.
- Click [Devices and Printers].

For Windows Server 2008 R2

- Go to [Start] -> [Devices and Printers].

For Windows Vista

- Click the button indicated with the Windows logo  at the left bottom of the desktop.
- Go to [Control Panel] -> [Hardware and Sound], and then click [Printer].

For Windows Server 2008

- Go to [Start] -> [Control Panel] -> [Printer].

For Windows XP Professional/Windows Server 2003/WEPOS

- Go to [Start] -> [Printers and Faxes].

For Windows XP Home Edition

- Go to [Start] -> [Control Panel] -> [Printers and Other Hardware].

For Windows 2000

- Go to [Start] -> [Settings] -> [Printers].

Steps to Check:

- 1) Right-click [FIT FP-xxx Raster], then click [Properties].

For Windows 8 / Windows 7 / Windows Server 2008 R2 /

Windows Server 2012

- Right-click [FIT FP-xxx Raster], and then click [Printer Properties].

For Windows Vista / Windows Server 2008

- Right-click [FIT FP-xxx Raster], and then click [Run as administrator] -> [Properties].

※ On Windows Sever 2008 Build-in account, right-click 「FIT FP-xxx Raster」 and click [Properties]

For Windows XP Professional / Windows Server 2003

Windows XP Home Edition / Windows 2000 / WEPOS

- Right-click [FIT FP-xxx Raster], then click [Properties].

- 2) On the [FIT FP-xxx Raster Properties] dialog box, click the [Print Test Page] tab.
- 3) The test page is printed.

* If the test page is not printed correctly, follow the procedure described in "2.1.4 When the Test Page Cannot Be Printed" to handle the problem.

2.1.4 When the Test Page Cannot Be Printed

a) For Serial, Parallel and USB and LAN Interface Connection

- 1) Ensure that the Roll Paper is set in the Printer.
- 2) Ensure that the top cover is closed.
- 3) Ensure that the interface cable is connected correctly.
- 4) Ensure that the power of the printer is turned on.
(If the power is already on, turn on the printer again.)
- 5) If the printer is in the offline state, follow the procedure below to set the printer in the online state.


Checking and Changing the Online State:

* "FP-xxx" is the model name of a printer.

For Windows 8 / Windows Server 2012

- Press the Windows logo key + X key, shortcut menu is displayed bottom left of the screen.
- Click [Control Panel] -> [Hardware and Sound] -> [Devices and Printers].
- Select [FIT FP-xxx Raster], and click [See what's printing].
When click [Printer] and checked [Use Printer Offline], please click and uncheck [Use Printer Offline].


For Windows 7

- Click the button indicated with the Windows logo  at the left bottom of the desktop.
- Click [Devices and Printers].
- Select [FIT FP-xxx Raster], and click [See what's printing].
When click [Printer] and checked [Use Printer Offline], please click and uncheck [Use Printer Offline].

For Windows Server 2008 R2

- Go to [Start]→[Devices and Printers].
- Select [FIT FP-xxx Raster], and click [See what's printing].
When click [Printer] and checked [Use Printer Offline], please click and uncheck [Use Printer Offline].

For Windows Vista

- Click the button indicated with the Windows logo  at the left bottom of the desktop.
- Go to [Control Panel] -> [Hardware and Sound], and then click [Printer].
- Click [FIT FP-xxx Raster], then right-click [Run as administrator]. If [Use Printer Online] is displayed, click [Use Printer Online].

For Windows Server 2008

- Go to [Start]→[Control Panel]→[Printer].
- Right-click 「FIT FP-xxx Raster」, then click [Run as administrator]. If [Use printer online] is displayed, click [Use printer online] .
- * On build-in account(Administrator), right-click 「FIT FP-xxx Raster」. If [Use printer online] is displayed, click [Use printer online] .

For Windows XP Professional/Windows Server 2003/WEPOS

- Go to [Start] -> [Printers and Faxes].
- Right-click [FIT FP-xxx Raster]. If [Use Printer Online] is displayed, click [Use Printer Online].

For Windows XP Home Edition

- Go to [Start] -> [Control Panel] -> [Printers and Other Hardware].
- Right-click [FIT FP-xxx Raster]. If [Use Printer Online] is displayed, click [Use Printer Online].

For Windows 2000

- Go to [Start] -> [Settings] -> [Printers].
- Right-click [FIT FP-xxx Raster]. If the [Use Printer Offline] check box is selected, clear the [Use Printer Offline] check box.

b) For USB Interface

Depending on the environment in use, the USB port may be different.

Follow the procedure below to change the printer driver settings and check the port by printing the test page.


- "FP-xxx" is the model name of a printer.

1) Follow the steps below to display the [Printer] or [Printers and Faxes] dialog box.

For Windows 8 / Windows Server 2012

- Press the Windows logo key + X key, shortcut menu is displayed bottom left of the screen.
- Click [Control Panel] -> [Hardware and Sound] -> [Devices and Printers].


For Windows 7

- Click the button indicated with the Windows logo  at the left bottom of the desktop.
- Click [Devices and Printers].

For Windows Server 2008 R2

- Go to [Start] -> [Devices and Printers].

For Windows Vista

- Click the button indicated with the Windows logo  at the left bottom of the desktop.
- Go to [Control Panel] -> [Hardware and Sound], and then click [Printer].

For Windows Server 2008

- Go to [Start] -> [Control Panel] -> [Printer].

For Windows XP Professional/Windows Server 2003/WEPOS

- Go to [Start] -> [Printers and Faxes].

For Windows XP Home Edition

- Go to [Start] -> [Control Panel] -> [Printers and Other Hardware].

For Windows 2000

- Go to [Start] -> [Settings] -> [Printers].

2) Follow the steps below to display the [FIT FP-xxx Raster Properties] dialog box.

For Windows 8 / Windows 7 / Windows Server 2008 R2 / Windows Server 2012

- Right-click [FIT FP-xxx Raster] and click [Printer Properties].

For Windows Vista / Windows Server 2008

- Right-click [FIT FP-xxx Raster] and click [Run as administrator] -> [Properties].

For Windows XP Professional/Windows Server 2003/WEPOS

For Windows XP Home Edition

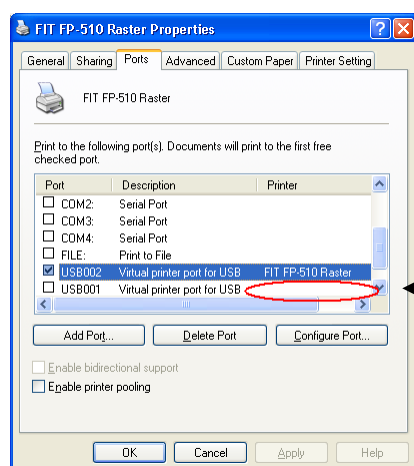
For Windows 2000

- Right-click [FIT FP-xxx Raster], then click [Properties].

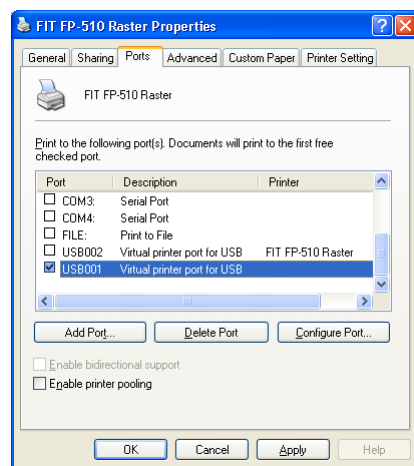
3) On the [FIT FP-xxx Raster] Properties dialog box, click the [Ports] tab.

4) The following Properties dialog box is displayed.

Example: To change the port from "USB002" to "USB001".



Select the port with these buttons are unavailable.
Such port is not used by the printer.



5) Click [Apply].

6) Turn off the power of the printer.

7) Turn on the power of the printer.

8) Click the [General] tab, and then click [Print Test Page].

9) The test page is printed.

2.2 Installing the OPOS Driver

The installer does not support the 64 Bit Windows Operating System.

To install the driver on the 64 Bit Windows Operating System, refer to "2.2.2 Installing on 64 Bit Operating System".

2.2.1 Using Installer to Install the Driver

a) Before Installation:

- When OPOS control (FIT FP POS PRINTER OPOS OCX) is already installed, please install this OPOS control after uninstallation of FP OPOS control.
Please refer how to uninstall to "4 Uninstalling the OPOS Driver".

 - Set the Roll Paper in the Printer.
 - Ensure that the top cover is closed.
 - Ensure that the interface cable is connected correctly.
- Make sure to check the above mentioned before to turn on the power of the printer.

- When "Found New Hardware Wizard" is displayed:

For USB interface connection, the computer may detect new hardware automatically when the power of the printer is turned on. Follow the steps below to handle this situation.

For Windows 8 / Windows Server 2012

- 1) "Device Setup" in the task bar is displayed, but no operation is required.

For Windows 7 / Windows Vista / Windows Server 2008 R2 / Windows Server 2008

- 1) A balloon message "Installing device driver software." is displayed (right bottom).
No operation is required.
- 2) When the message is changed to "Your devices are ready to use.", the wizard automatically exits.
- 3) If you click the balloon message, the message [No Printer Attached.] is displayed.
You can ignore the message. Click [Close].
- 4) Proceed to the next procedure, "b) Installation Steps".

For Windows XP / WEPOS

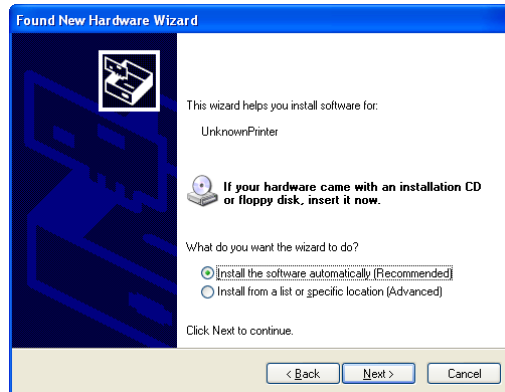
- 1) The balloon message "Found New Hardware" is displayed (right bottom), but the wizard automatically exits. When the message disappears, proceed to the next procedure, "b) Installation Steps".

For Windows Server 2003 (or Windows XP)

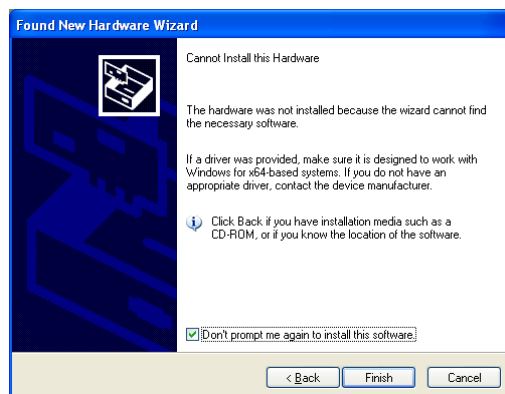
- 1) Select the "No, not this time" check box, and then click [Next].



- 2) Select the "Install the software automatically" check box, and then click [Next].



- 3) Select the "Don't prompt me again to install this software." check box, and then click [Finish].



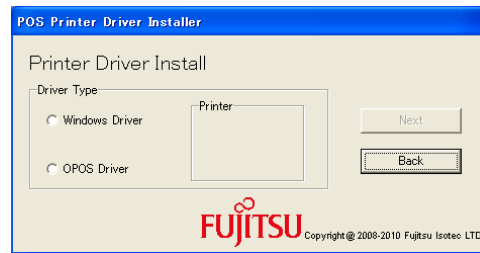
- 4) The message "Cannot Install this Hardware" is displayed. You can ignore the message.

The wizard will be closed. Proceed to the next procedure, "b) Installation Steps".

For Windows 2000

- 1) The message "Found New Hardware" is displayed in the center of the screen, but the wizard automatically exits. When the message disappears, proceed to the next procedure, "b) Installation Steps".

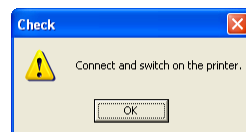
b) Installation Steps:



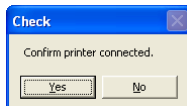
- 1) Under [Driver Type], select the [OPOS Driver] check box, and then click [Next].



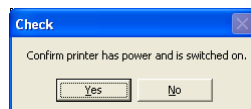
- 2) Connect the printer and interface you intend to use, turn the power of the printer, and then click [OK].



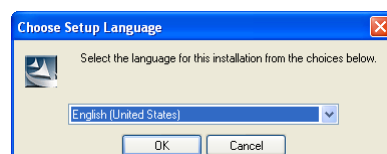
- 3) Check the connection with the printer and click [Yes].



- 4) Check the power of the printer is turned on and click [Yes].



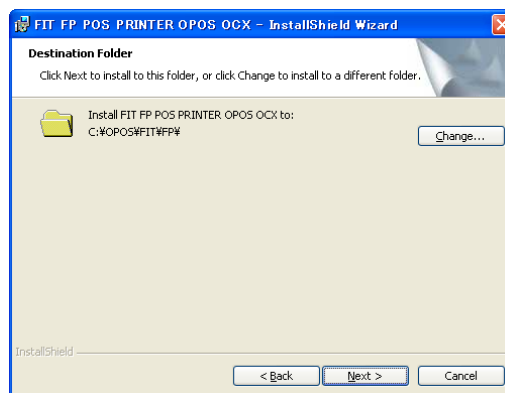
- 5) Select "English (United States)" about the setup language.



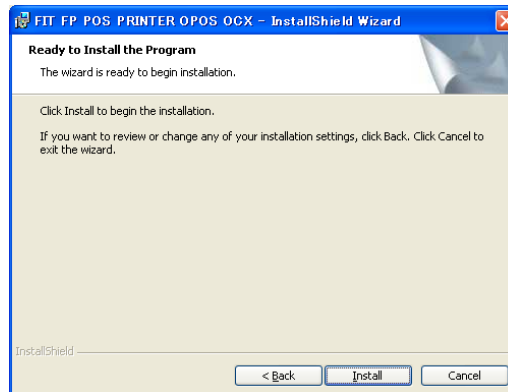
- 6) Set Up Program starts and click [Next] button.



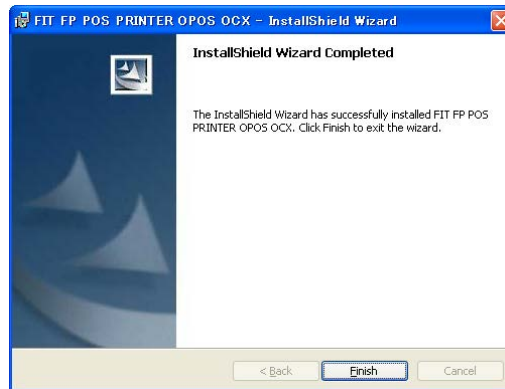
- 7) Click [Next] button.



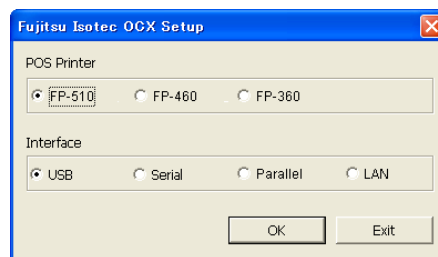
- 8) Click [Install] button.



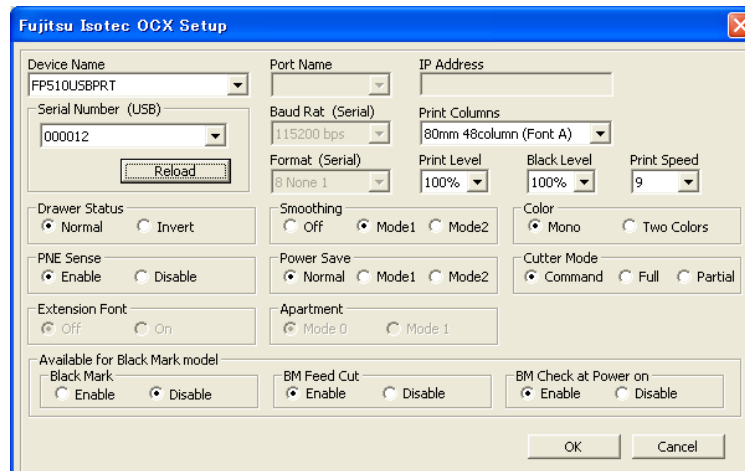
- 9) Click [Finish] button.



- 10) When installation completes, the following set up dialog box is displayed.
Select Printer model and Interface type.



- 11) The following set up dialog box is displayed.



For Serial Port Connection

For [Device Name], select FPxxxSERPRT or FPxxxSER2PRT.

For [Port Number], select the port name connected (such as COM1).

For Parallel Port Connection

For [Device Name], select FPxxxPARPRT or FPxxxPAR2PRT.

For [Port Number], select the port name connected (such as LPT1).

For USB Port Connection

For [Device Name], select FPxxxUSBPRT or FPxxxUSB2PRT.

For [Serial Number], select the manufacturer's serial number.

Follow the procedure described in "2.2.4 Checking Manufacturer's Serial Number" to check the manufacturer's serial number.

For LAN Port Connection

Click "Printer Detection" and select the displayed printer.

Then click "Printer Setting" button.

After setting up the port, click [OK]. The printer settings are changed, and installation is completed. (For details of setting up the printer, refer to the Application Programmers' Guide)

* "FPxxx" is the model name of a printer.

* To check the result of installation, follow the procedure described in "2.2.3 Checking Installation".

2.2.2 Installing to 64 Bit Operation System

a) Before starting the installation:

See "a) Before starting the installation" in "2.2.1 Driver installation using the installer."

b) Installation procedure

(1) Copy the driver folder ("\\OPOS\\en\\driver_x64") to desired folder.

(2) The installation screen is displayed.


For the further installation steps, refer to "b) Installation procedure (5) - (9)" in "2.2.1 Driver installation using the installer."

(3) Run Setup after the installation is completed.

For Windows 8 / Windows Server 2012

- Press the Windows logo key + X key, shortcut menu is displayed bottom left of the screen.
- Click [Command Prompt(Admin)]

For Windows 7/Vista

- Click the  Windows logo button in the lower-left corner of the desktop screen.
- Click [All Programs] -> [Accessories] and right-click [Command Prompt] and click [Run as administrator]. Execute the command prompt as the Administrator.

For Windows XP/ Server 2008 R2 / Server 2008 / Server 2003/ WEPOS / WEPOS2009 / Windows 2000

- Go to [Start] -> [All Programs] -> [Accessories] -> [Command Prompt].

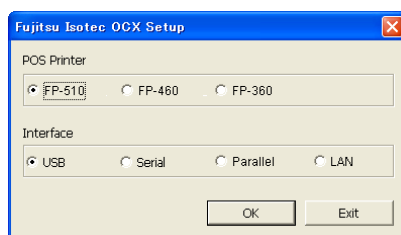
(4) Set the current directory of the Command Prompt to the location where the folder was copied to at the step 1), then execute the batch file "install.bat".

(5) When the [Registry Editor] screen is displayed and the confirmation message for adding to the registry is displayed, click [Yes]. When adding to the registry completes, the completion message for adding to the registry is displayed. Click [OK].

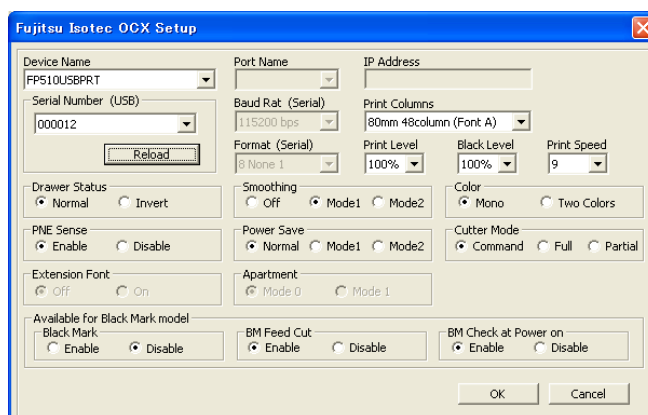
(6) Under "C:\\OPOS\\FIT\\FP\\", the driver is installed.

(7) Start "C:\\OPOS\\FIT\\FP\\FPPrinterSetup.exe" to execute set up.

- (8) The following set up dialog box is displayed.
Select Printer model and Interface type.



- 9) The following set up dialog box is displayed.



For Serial Port Connection

For [Device Name], select FPxxxSERPRT or FPxxxSER2PRT.

For [Port Number], select the port name connected (such as COM1).

For Parallel Port Connection

For [Device Name], select FPxxxPARPRT or FPxxxPAR2PRT.

For [Port Number], select the port name connected (such as LPT1).

For USB Port Connection

For [Device Name], select FPxxxUSBPRT or FPxxxUSB2PRT.

For [Serial Number], select the manufacturer's serial number.

Follow the procedure described in "2.2.4 Checking Manufacturer's Serial Number" to check the manufacturer's serial number.

For LAN port connection

Click [Printer Detection], and then select the printer that appears.

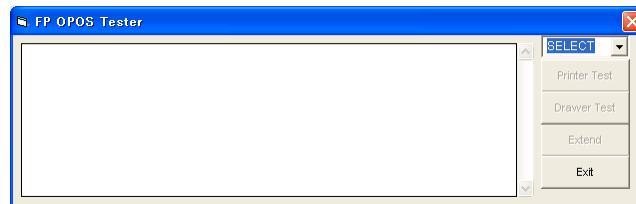
Then, click [Printer Setting].

After setting up the port, click [OK]. The printer settings are changed, and installation is completed. (For details of setting up the printer, refer to the Application Programmers' Guide)

2.2.3 Checking Installation

In the [\\OPOS\\en\\Sample] folder in the Disk, an easy-to-use program to confirm the behavior of OPOS is included.

Utilize it to check the result if installation and other purpose.



Start "FP_OPOS_Tester.exe".

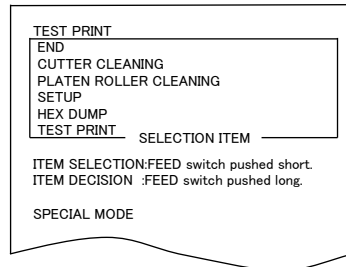
- Easy Way for Testing

- 1) Select printer and interface.
- 2) Click [Printer Test].

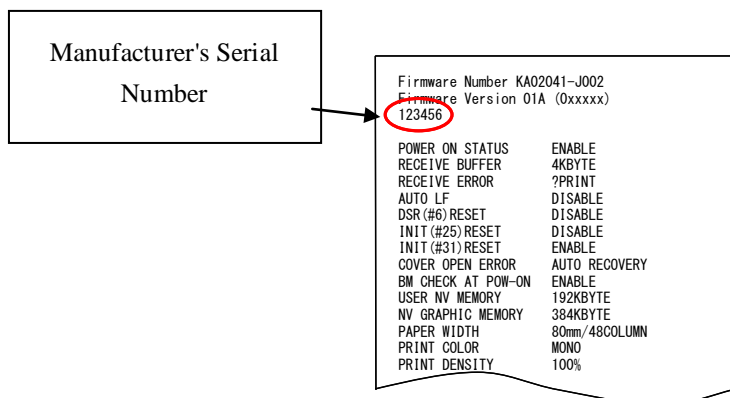
- If the test succeeds, "Test: Success" is displayed.
- If the test fails, "Test: Fail" is displayed. Check the power of the printer and interface connection, and start installation again.

2.2.4 Checking Manufacturer's Serial Number

- 1) Set paper in the printer and close the cover.



- 2) Press and hold the FEED switch and turn on the power of the printer. Hold the switch until the printer start printing.
- 3) When the following is printed, release the FEED switch.
- 4) Press and hold the FEED switch again (longer than 1 second) until the printer start printing. Then release the FEED switch.
- 5) Press the FEED switch again to finish printing.
- 6) Turn off the power of the printer.



3 Uninstalling Windows Driver

3.1 For Windows 8 / Windows Server 2012

- If the [User Account Control] dialog box is displayed, click [Yes].


Steps to delete :

- ① Press the Windows logo key + X key, shortcut menu is displayed bottom left of the screen.
- ② Click [Control Panel] -> [Hardware and Sound] -> [Devices and Printers].
- ③ Select [FIT FP-xxx Raster] in [Printers] part , and click [Remove device].
- ④ The [Are you sure you want to remove this device ? 'FIT FP-xxx Raster'] dialog box is displayed. Click [Yes].
- ⑤ Select "Fax" or "Microsoft XPS Document Writer" in [Printers] part, and click [Print server properties].
- ⑥ Click the [Drivers] tag, and click [Change Driver Settings].
- ⑦ Select [FIT FP-xxx Raster] in the list of [Installed printer drivers], and then click [Remove].
- ⑧ The [Remove Driver And Package] screen is displayed. Select [Remove driver and driver package] and click [OK].
- ⑨ The [Deleting this printer driver package will remove it from the system. Are you sure you want to delete 'FIT FP-xxx Raster' ?] dialog box is displayed. Click, [Yes].
- ⑩ The [Remove Driver Package] dialog box is displayed. Click [Delete].
- ⑪ When deletion of the driver is completed, click [OK]. Click [Close] to exit the [Print Server Properties] dialog.
- ⑫ Turn off the power of the printer and restart the computer.

3.2 For Windows 7

- If the [User Account Control] dialog box is displayed, click [Yes].

Steps to delete :

- ① Click the button indicated with Windows logo  at the left bottom of the desktop.
- ② Click [Devices and Printers].
- ③ Select [FIT FP-xxx Raster] in [Printers and Faxes] part , and click [Remove device].
- ④ The [Are you sure you want to remove this device ? 'FIT FP-xxx Raster'] dialog box is displayed. Click [Yes].
- ⑤ Select "Fax" or "Microsoft XPS Document Writer" in [Printers and Faxes] part, and click [Print server properties].
- ⑥ Click the [Drivers] tag, and click [Change Driver Settings].
- ⑦ Select [FIT FP-xxx Raster] in the list of [Installed printer drivers], and then click [Remove].
- ⑧ The [Remove Driver And Package] screen is displayed. Select [Remove driver and driver package] and click [OK].
- ⑨ The [Deleting this printer driver package will remove it from the system. Are you sure you want to delete 'FIT FP-xxx Raster' ?] dialog box is displayed. Click, [Yes].
- ⑩ The [Remove Driver Package] dialog box is displayed. Click [Delete].
- ⑪ When deletion of the driver is completed, click [OK]. Click [Close] to exit the [Print Server Properties] dialog.
- ⑫ Turn off the power of the printer and restart the computer.

3.3 For Windows Server 2008 R2

- If the [User Account Control] dialog box is displayed, click [Yes].


Steps to delete :

- ① Go to [Start] → [Devices and Printers].
- ② Select [FIT FP-xxx Raster] in [Printers and Faxes] part, and click [Remove device].
- ③ The [Are you sure you want to remove this device ? 'FIT FP-xxx Raster'] dialog box is displayed. Click [Yes].
- ④ Select "Fax" or "Microsoft XPS Document Writer" in [Printers and Faxes] part, and click [Print server properties].
- ⑤ Click the [Drivers] tag, and click [Change Driver Settings].
- ⑥ Select [FIT FP-xxx Raster] in the list of [Installed printer drivers], and then click [Remove].
- ⑦ The [Remove Driver And Package] screen is displayed. Select [Remove driver and driver package] and click [OK].
- ⑧ The [Deleting this printer driver package will remove it from the system. Are you sure you want to delete 'FIT FP-xxx Raster' ?] dialog box is displayed. Click, [Yes].
- ⑨ The [Remove Driver Package] dialog box is displayed. Click [Delete].
- ⑩ When deletion of the driver is completed, click [OK]. Click [Close] to exit the [Print Server Properties] dialog.
- ⑪ Turn off the power of the printer and restart the computer.

3.4 For Windows Vista

- If the [User Account Control] dialog box is displayed, click [Continue].

Steps to delete :

- ① Click the button indicated with Windows logo  at the left bottom of the desktop.
- ② Go to [Control Panel]→[Hardware and Sound], and then click [Printer].
- ③ Select 「FIT FP-xxx Raster」 and go to [Cleanup]→[Delete].
- ④ The 「Do you delete 'FIT FP-xxx Raster' ?」 dialog box is displayed. Click [Yes].
- ⑤ Go to [Cleanup]→[Layout]→[Menu bar].
- ⑥ Go to [Files]→[Run as administrator]→[Server Properties].
- ⑦ Click the [Driver] tag, select 「FIT FP-xxx Raster」 in the list of 「Printer drivers installed」, and then click [Delete].
- ⑧ The [Delete Driver and Package] screen is displayed. Select [Delete Driver and Driver Package] and click [OK].
- ⑨ The 「If you delete this printer driver package, the driver package is removed from the system. Do you delete 'FIT FP-xxx Raster' ?」 dialog box is displayed. Click, [Yes].
- ⑩ The [Delete Driver Package] dialog box is displayed. Click [Delete].
- ⑪ When deletion of the driver is completed, click [OK]. Click [Close] to exit the [Print Server Properties] dialog.
- ⑫ Turn off the power of the printer and restart the computer.

3.5 For Windows Server 2008

- If the [User Account Control] dialog box is displayed, click [Continue anyway].

Steps to delete :

- ① Go to [Start]→[Control Panel]→[Printer].
- ② Select 「FIT FP-xxx Raster」 and go to [Cleanup]→[Delete].
- ③ The 「Do you delete 'FIT FP-xxx Raster'?」 dialog box is displayed. Click [Yes].
- ④ Go to [Cleanup]→[Layout]→[Menu bar].
- ⑤ Go to [Files]→[Run as administrator]→[Server Properties].
※ On Build-in Account (Administrator), go to [Files]→[Server Properties].
- ⑥ Click the [Driver] tag, select 「FIT FP-xxx Raster」 in the list of 「Printer Drivers installed」, and then click [Delete].
- ⑦ The [Delete Driver and Package] screen is displayed. Select [Delete Driver and Driver package], and then click [OK].
- ⑧ The 「If you delete this printer driver package, the driver package is removed from the system. Do you delete 'FIT FP-xxx Raster' ?」 dialog box is displayed. Click [Yes].
- ⑨ The [Delete Driver Package] dialog is displayed. Click [Delete].
- ⑩ When deletion of the driver is completed, click [OK]. Click [close] to exit the [Print Server Properties] dialog.
- ⑪ Turn off the power of the printer and restart the computer.

3.6 For Other Operating System

Follow the steps below to display the [Printer] or [Printers and Faxes] dialog box is displayed.

【For Windows XP Professional/ Server 2003】

- Go to [Start]→[Printers and Faxes].

【For Windows XP Home Edition】

- Go to [Start]→[Control Panel]→[Printers and Other Hardware].

【For Windows 2000】

- Go to [Start]→[Settings]→[Printer].

Steps to delete :

- ①Select 「FIT FP-xxx Raster」 and go to [Files]→[Delete].
- ②The 「Do you delete 'FIT FP-xxx Raster' ? 」 dialog box is displayed. Click [Yes].
- ③Go to [Files]→[Server properties].
- ④Click the [Driver]tab, select 「FIT FP-xxx Raster」 in the list of 「Printer drivers installed」 , and then click [Delete].
- ⑤The [Print Server Properties] dialog box is displayed. Click [Yes].
- ⑥When deletion of the driver is completed, click [Close] to exit the [Print Server Properties].
- ⑦Turn off the power of the printer and restart the computer.

4 Uninstalling the OPOS Driver


4.1 For 32 Bit Operating System

- 1) Follow the steps below to display the [Printer] or [Printers and Faxes] dialog box.

For Windows 8

- Press the Windows logo key + X key, shortcut menu is displayed bottom left of the screen.
- Click [Control Panel] -> [Programs] then click [Uninstall a program].

For Windows 7 / Windows Vista

- Click the button indicated with the Windows logo  at the left bottom of the desktop.
- Go to [Control Panel] -> [Programs] then click [Uninstall a program].

For Windows Server 2008

- Go to [Start] -> [Control Panel] -> [Programs] then click [Uninstall a program].

For Windows XP Professional/ XP Home Edition/Windows Server 2003/WEPOS

- Go to [Start] -> [Control Panel] then click [Add or Remove Program].

For Windows 2000

- Go to [Start] -> [Settings] -> [Control Panel] then click [Add/Remove Programs].


- 2) Select [FIT FP POS PRINTER OCX], then click [Uninstall/Change] or [Change/Remove].
- 3) When the confirm screen for deleting the file is displayed, click [Yes].
- 4) Un-installation of the driver is executed.
- 5) Some files may not be deleted. Delete them manually from the "C:\OPOS\FIT\FP\" folder.

4.2 For 64 Bit Operating System

To Uninstall from Windows 8 / Windows Server 2012

- 1) Press the Windows logo key + X key, shortcut menu is displayed bottom left of the screen.
- 2) Click [Command Prompt(Admin)].
- 3) In the folder "C:\OPOS\FIT\FP\", execute the batch file "uninstall.bat".
- 4) Delete the "C:\OPOS\FIT\FP\" folder manually.
- 5) It is the end of procedure.

To Uninstall from Windows 7 / Windows Vista / Windows Server 2008 R2 / Windows Server 2008

- 1) Click the button indicated with the Windows logo  at the left bottom of the desktop.
- 2) Click [All Programs] -> [Accessories] and right-click [Command Prompt] and click [Run as administrator]. Execute the command prompt as the Administrator.
- 3) In the folder "C:\OPOS\FIT\FP\", execute the batch file "uninstall.bat".
- 4) Delete the "C:\OPOS\FIT\FP\" folder manually.
- 5) It is the end of procedure.

To Uninstall from the Operating System except Windows Vista

- 1) Go to [Start] -> [All Programs] -> [Accessories] -> [Command Prompt].
- 2) In the folder "C:\OPOS\FIT\FP\", execute the batch file "uninstall.bat".
- 3) Delete the "C:\OPOS\FIT\FP\" folder manually.
- 4) It is the end of procedure.

5 Utility

5.1 Overview

This is an utility software to perform various setting of the FP-510/FP-460/FP-360 Printer remotely from the computer.

By using this utility, you can change the various settings of the FP-510/FP-460/FP-360 Printer in an easy method.

You can register the logo that can be printed with the Windows driver.

5.2 Installation

a) Before Installation:

- If the printer driver supporting the FP-510/FP-460/FP-360 Printer is not installed in the computer, FITPOS5 cannot be used. Make sure to install the printer driver supporting the FP-510/FP-460/FP-360 Printer before using FITPOS5.
- To use this utility, make sure to log in using the account with the Administrator privilege.

b) Installation Steps:

- Create a folder in the hard disk, and copy all files (fitpos5.exe, fitpos5.chm, pos5spec.ini) to the folder included in the "utility" folder.

5.3 Starting Up

- Double click "fitpos5.exe" from the folder you installed, or select "fitpos5.exe" from [Start] -> [Run...]
- Select the FP-xxx Printer [FIT FP-xxx Raster] and click [OK].

* For Windows 8 / Windows 7 / Windows Vista / Windows Server 2012 / Windows Server 2008 R2 Windows Server 2008, the [User Account Control] dialog box may be displayed on start up. Select [Allow] or [Yes].

* "FP-xxx" is the model name of a printer.

5.4 Un-installation

Delete all files within the folder created on installation.