



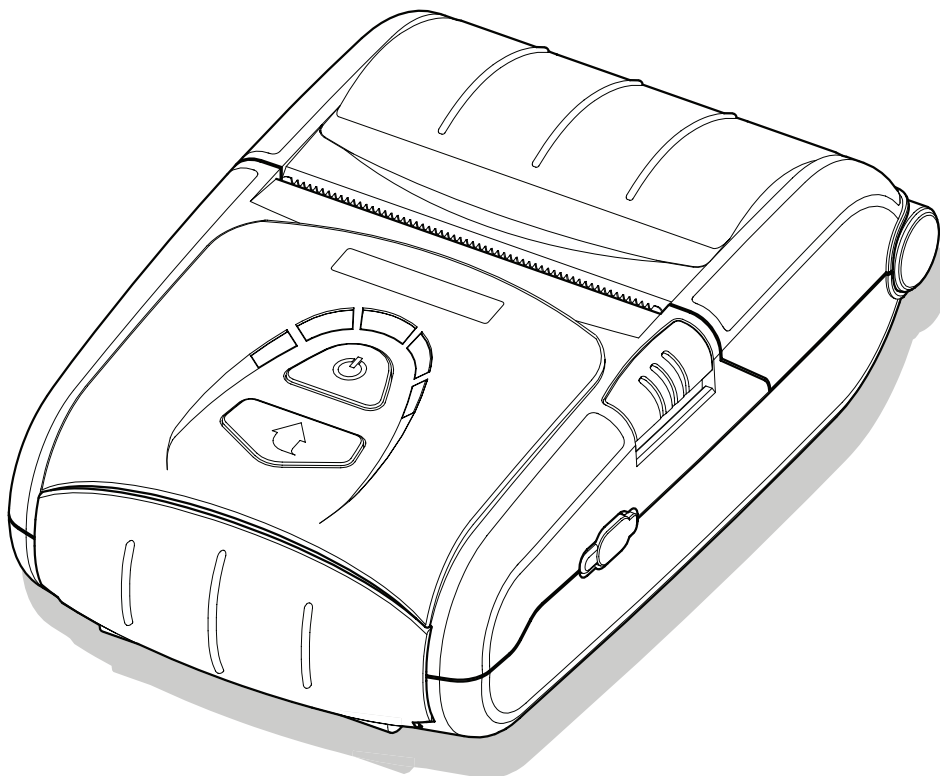
# Windows Driver Manual

## **SPP-R200**

---

**Mobile Printer**

**Rev. 1.05**



<http://www.bixolon.com>

## ■ Table of Contents

<b>1. Manual Information.....</b>	<b>3</b>
<b>2. Operating System (OS) Environment.....</b>	<b>3</b>
<b>3. Windows Driver Preparation .....</b>	<b>3</b>
<b>4. Windows Driver Installation .....</b>	<b>4</b>
4-1 Installing on Windows 2000 .....	4
4-1-1 Via Serial Port or Bluetooth .....	4
4-1-2 Via USB Port .....	8
4-2 Installing on Windows XP/2003 Server.....	12
4-2-1 Via Serial Port or Bluetooth .....	12
4-2-2 Via USB Port .....	16
4-3 Installing on Windows VISTA/2008 Sever/7 .....	23
4-3-1 Via Serial Port or Bluetooth .....	23
4-3-2 Via USB Port .....	27
<b>5. Detailed Windows Driver Settings.....</b>	<b>31</b>
5-1 Paper Supply Method .....	31
5-2 Paper Size .....	33
5-3 Additional Commands.....	34
<b>6. Windows Driver Specifications.....</b>	<b>36</b>
6-1 Fonts.....	36
6-2 Special Functions .....	37
6-3 Barcodes .....	38
6-4 Two-Dimensional Barcodes .....	38
<b>7. Use of Windows Driver .....</b>	<b>39</b>
7-1 Use of Visual Basic.....	39
7-1-1 Windows Driver Selection.....	39
7-1-2 Test Printing.....	40
7-1-3 Barcode Printing .....	40
7-1-4 Two-Dimensional Barcode Printing.....	40
7-2 Use of Wordpad .....	41
7-2-1 Wordpad Environment Settings .....	41
7-2-2 Text Printing.....	41
7-2-3 Barcode Printing .....	42
7-2-4 Two-Dimensional Barcode Printing.....	43

## **1. Manual Information**

This Windows Driver Installation Manual provides information on installation, detailed specifications, and usage of the printer's Windows Driver according to PC operating system (OS).

We at BIXOLON maintain ongoing efforts to enhance and upgrade the functions and quality of all our products. In following, product specifications and/or user manual content may be changed without prior notice.

## **2. Operating System (OS) Environment**

The following operating systems are supported for usage.

- Microsoft Windows 2000
- Microsoft Windows XP (32bit)
- Microsoft Windows 2003 Server (32bit)
- Microsoft Windows Embedded For Point Of Service
- Microsoft Windows VISTA (32bit)
- Microsoft Windows 2008 Server (32bit)
- Microsoft Windows 7 (32bit)

## **3. Windows Driver Preparation**

The Windows Driver is included in the enclosed CD, and Latest file versions can be downloaded from the BIXOLON website.

[www.bixolon.com](http://www.bixolon.com)

If downloading from the BIXOLON website, first download the SPP-R200\_Vx.x.xx.zip file, then unzip the file, and run the SPP-R200\_Vx.x.xx.exe file.

If using the enclosed CD, click the "Windows Driver" button to find and run the Windows Driver installation file (SPP-R200\_Vx.x.xx.exe).

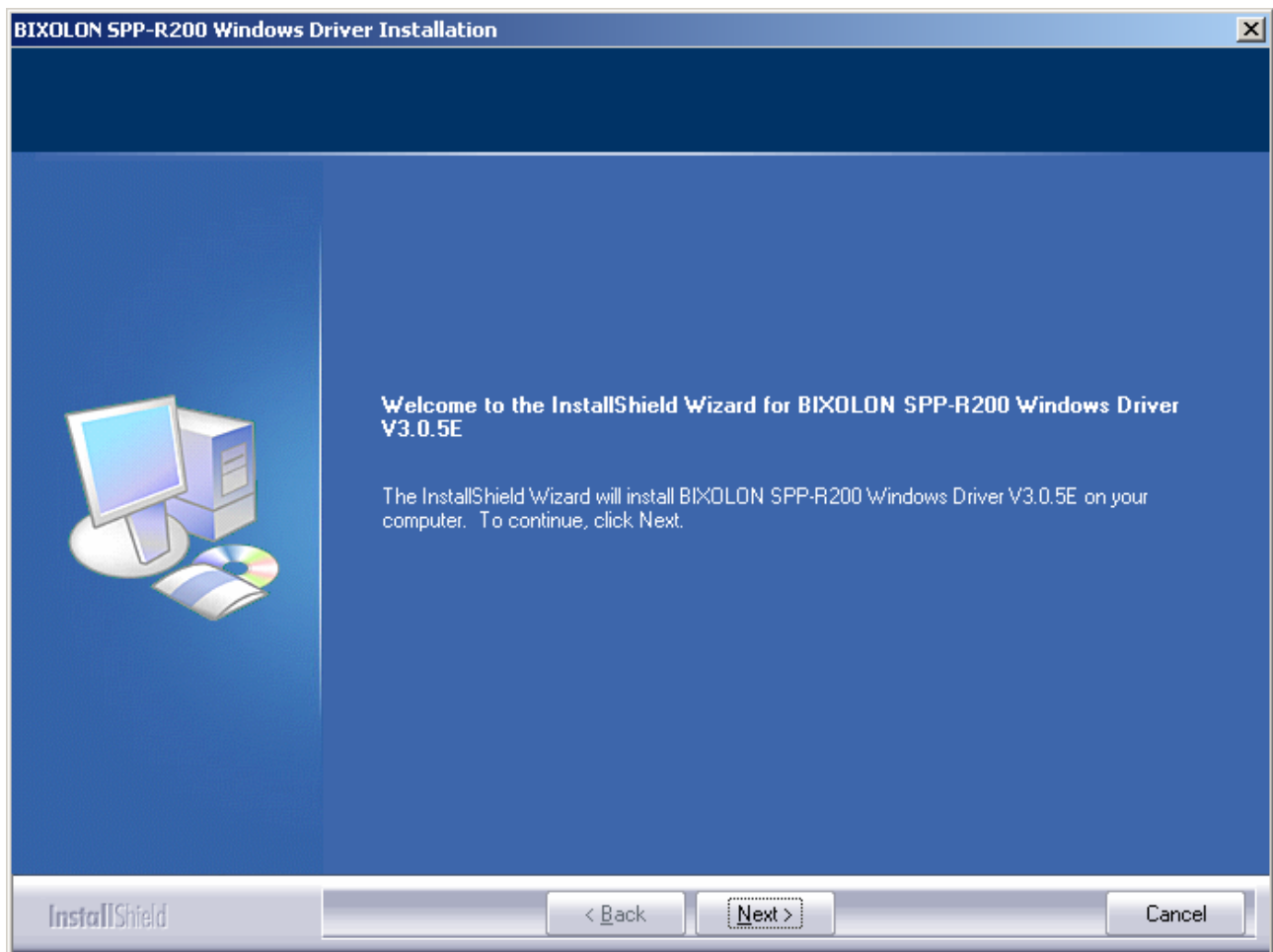
## 4. Windows Driver Installation

### 4-1 Installing on Windows 2000

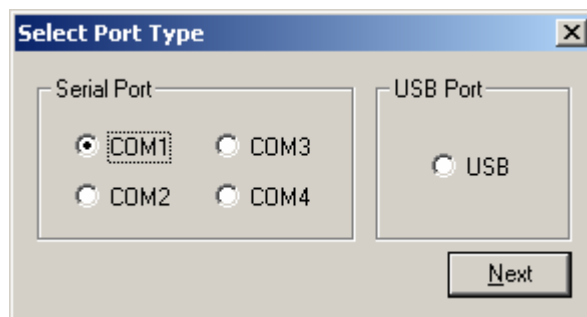
#### 4-1-1 Via Serial Port or Bluetooth

1) Double-click the Windows Driver installation file (SPP-R200\_Vx.x.xx.exe).

2) Click the “Next” button.

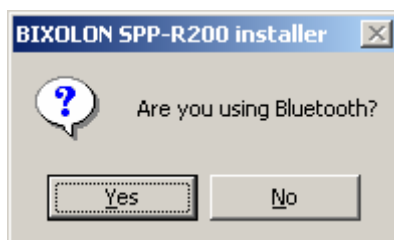


3) Select the COM port to be used and click the “Next” button.



4) If using Bluetooth, click the “Yes” button.

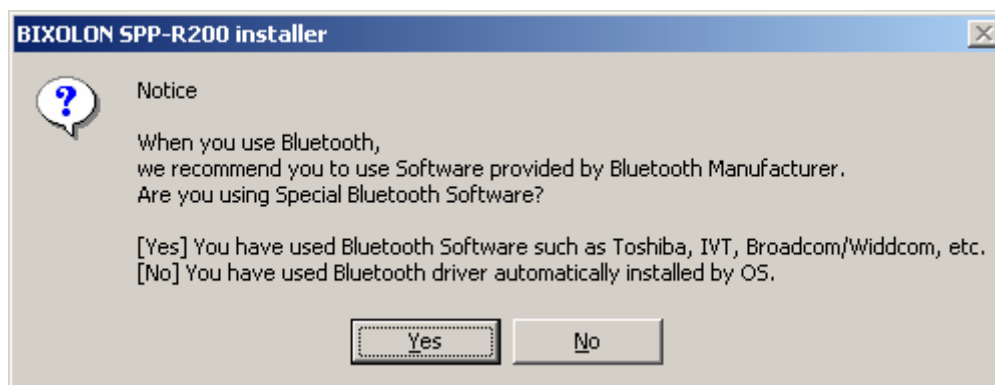
- Click “No” if using a Serial port.
- To use Bluetooth, first install the corresponding product software.  
(Refer to the user manual of the corresponding product.)



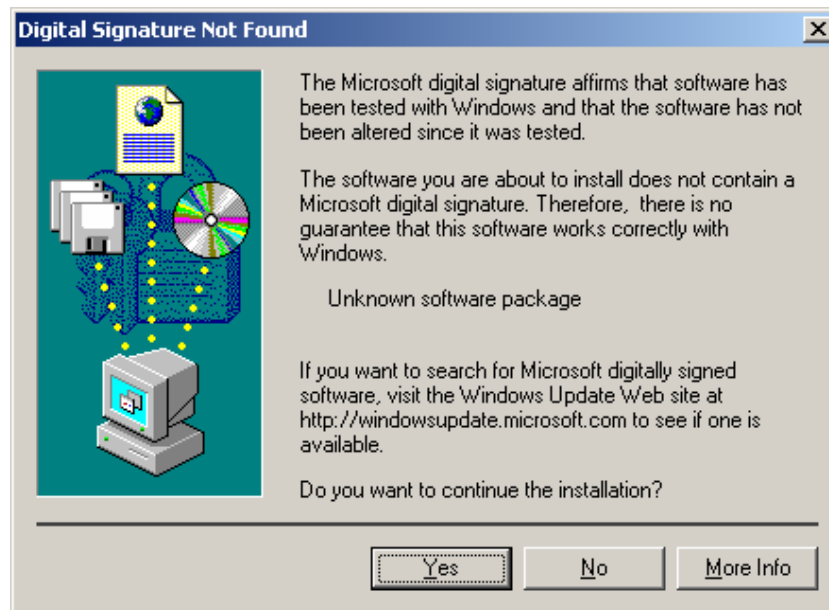
\* Select the Bluetooth Driver to be used.

“Yes”: to use an IVT, Broadcom Driver

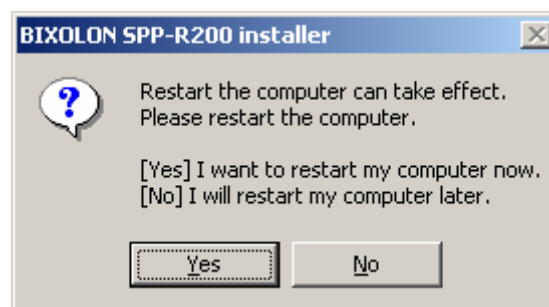
“No”: to use a driver supplied by the Windows OS



5) When the following message box appears, click the “Yes” button.



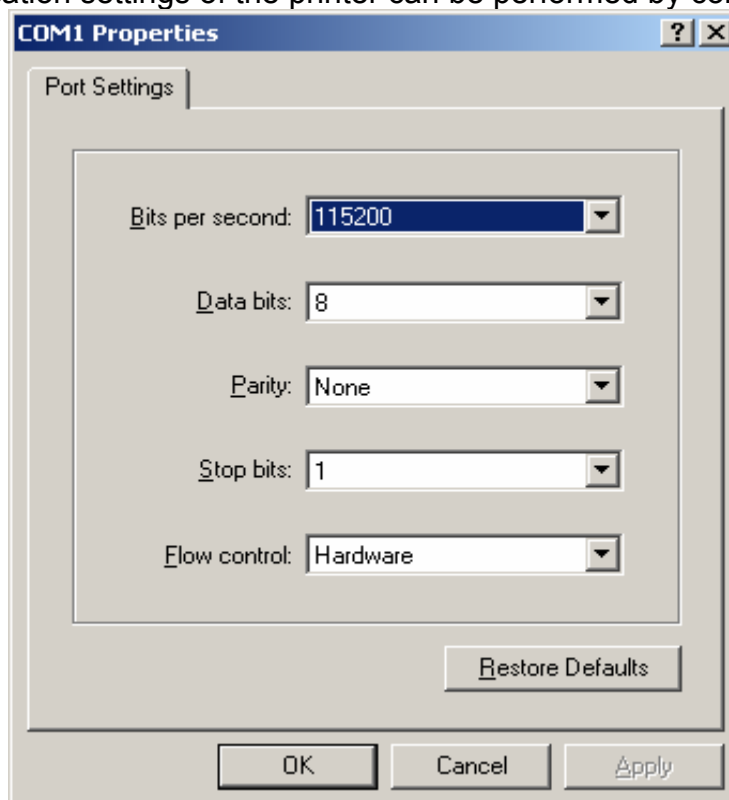
6) Clicking the "Yes" button will reboot the PC.



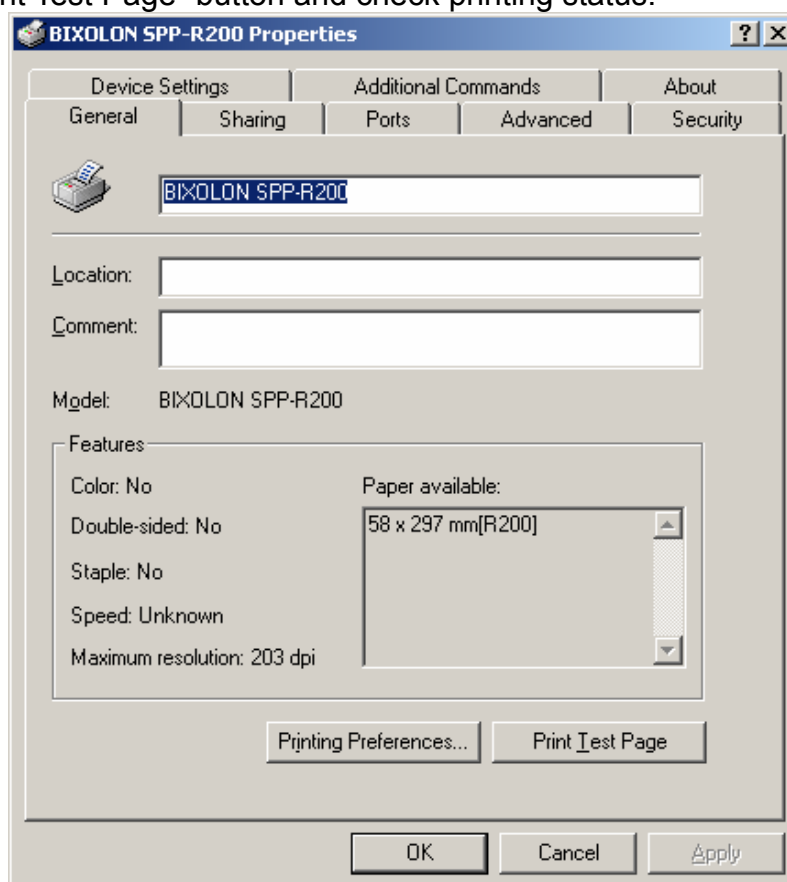
7) Open the printer properties window in the Windows OS.

8) Click the “Port Settings” button in the “Ports” tab.

- 9) Match the communication settings to those of the printer.  
(The communication settings of the printer can be performed by conducting a self-test.)



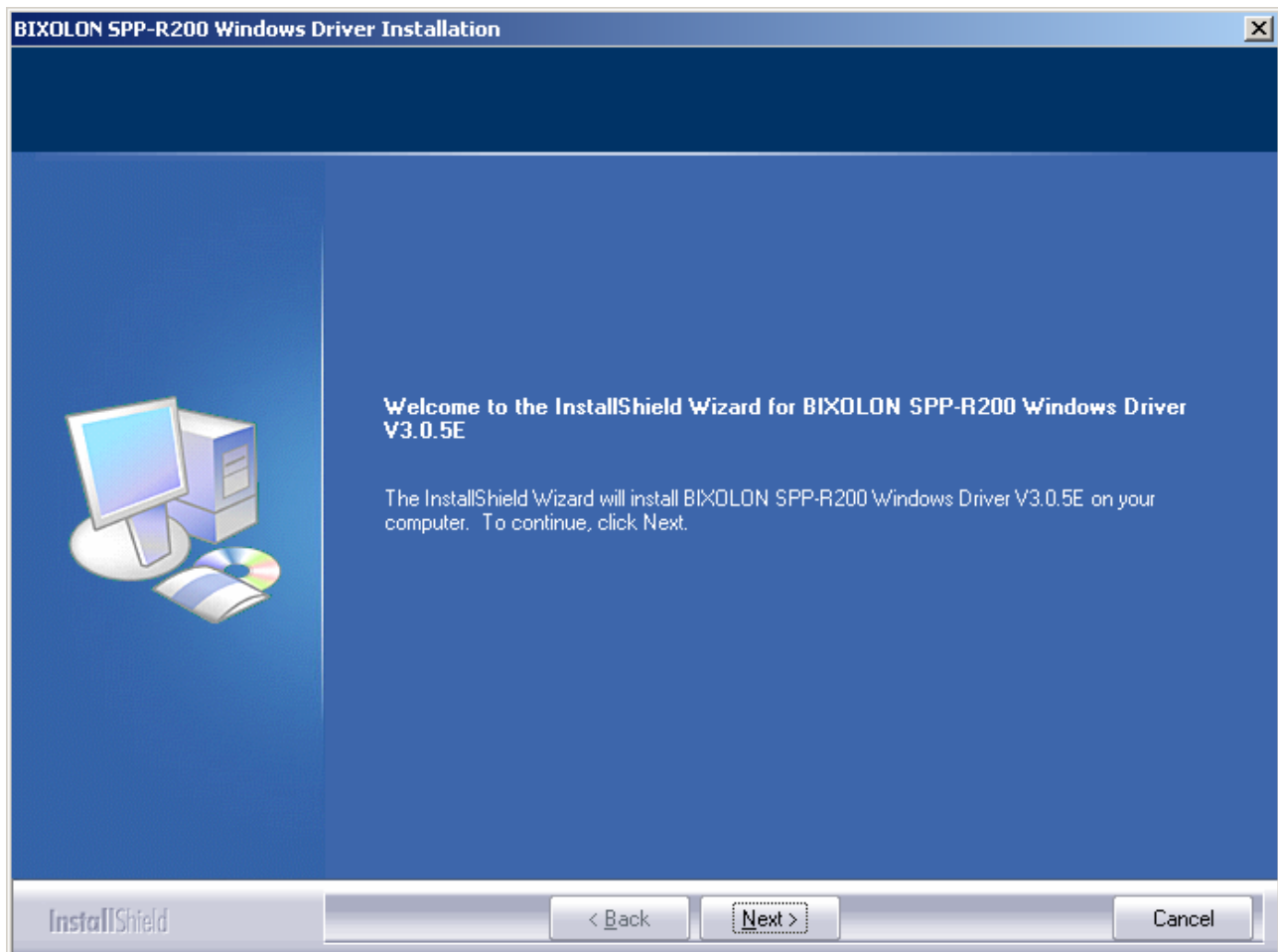
- 10) Click the "Print Test Page" button and check printing status.



- 11) Proper installation of the driver is indicated if the test page is printed normally.

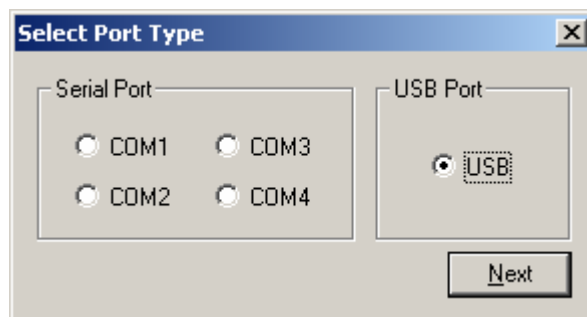
#### 4-1-2 Via USB Port

- 1) Double-click the Windows Driver installation file (SPP-R200\_Vx.x.xx.exe).
- 2) Click the “Next” button.





3) Select USB and click the "Next" button.



4) When the following message box appears, click the "Yes" button.

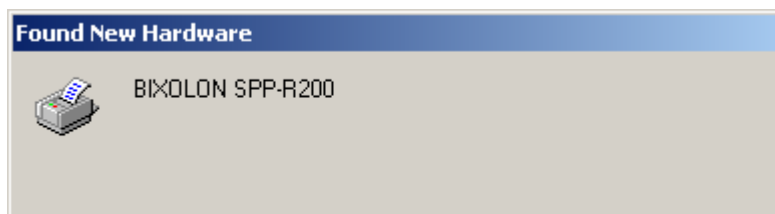


5) Click the "OK" button.

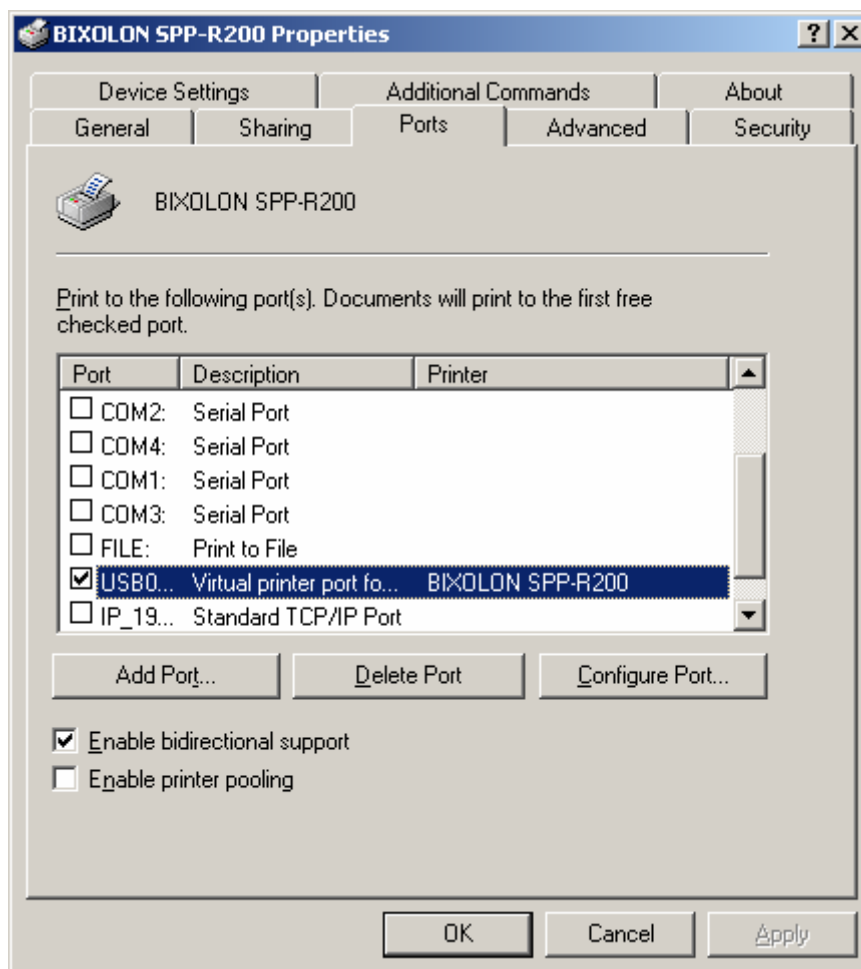


6) Turn on the printer.

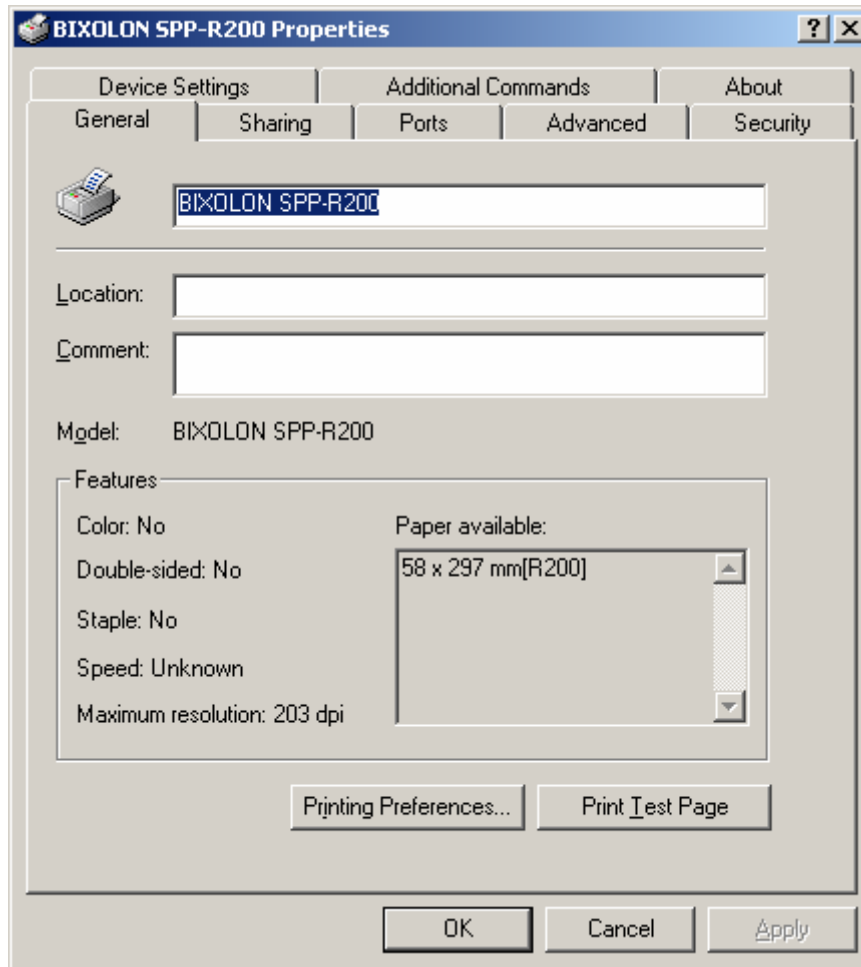
7) The Windows Driver is automatically installed.



8) The USB Port setting can be confirmed in the Windows Driver properties.



9) Click the “Print Test Page” button and check printing status.



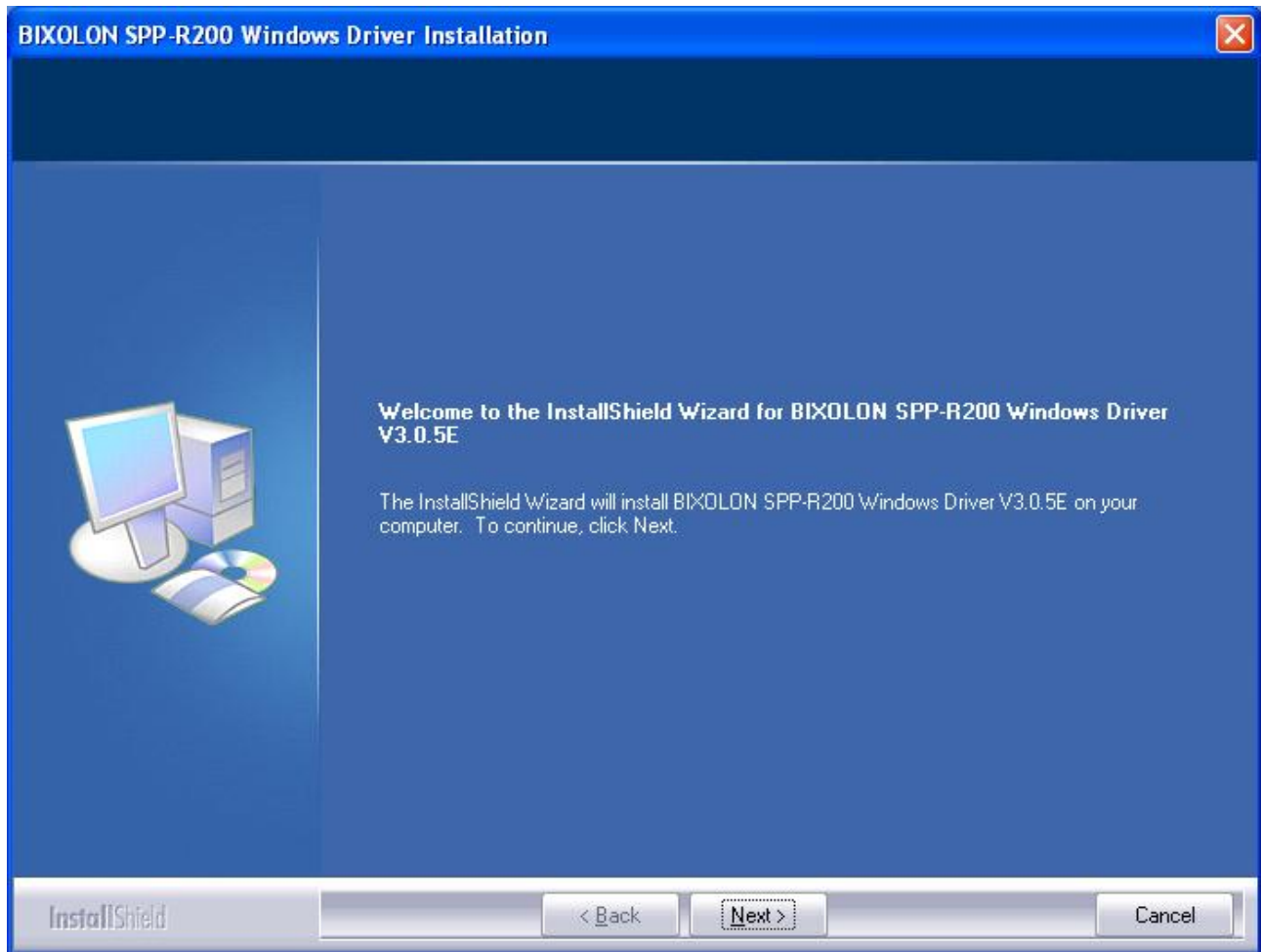
10) Proper installation of the driver is indicated if the test page is printed normally.

## **4-2 Installing on Windows XP/2003 Server**

### **4-2-1 Via Serial Port or Bluetooth**

1) Double-click the Windows Driver installation file (SPP-R200\_Vx.x.xx.exe).

2) Click the “Next” button.

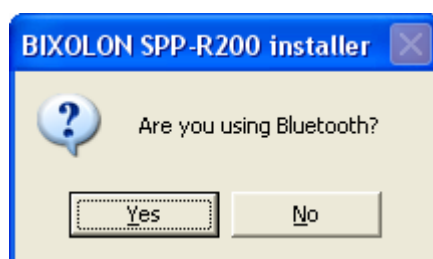


3) Select the COM port to be used and click the “Next” button.



4) If using Bluetooth, click the “Yes” button.

- Click “No” if using a Serial port.
- To use Bluetooth, first install the corresponding product software.  
(Refer to the user manual of the corresponding product.)



\* Select the Bluetooth Driver to be used.

“Yes”: to use an IVT, Broadcom Driver

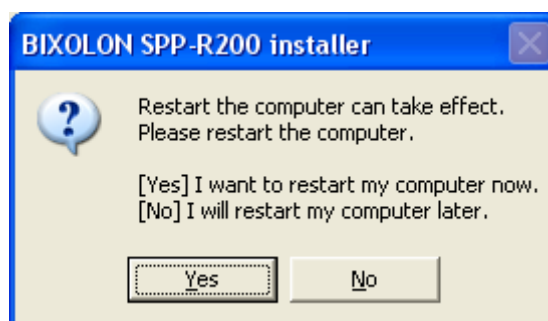
“No”: to use a driver supplied by the Windows OS



5) When the following message box appears, click the “Continue Anyway” button.



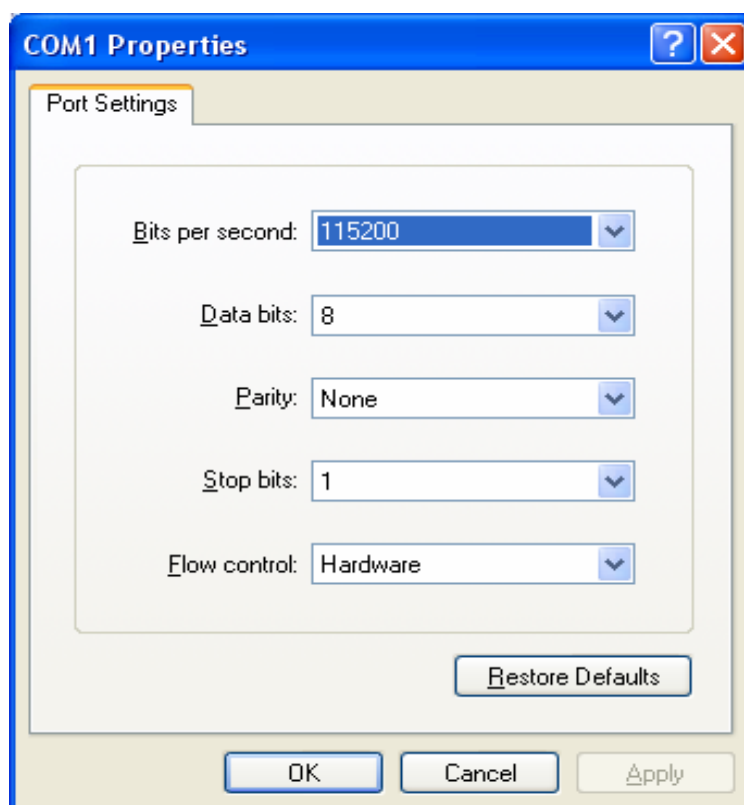
6) Clicking the "Yes" button will reboot the PC.



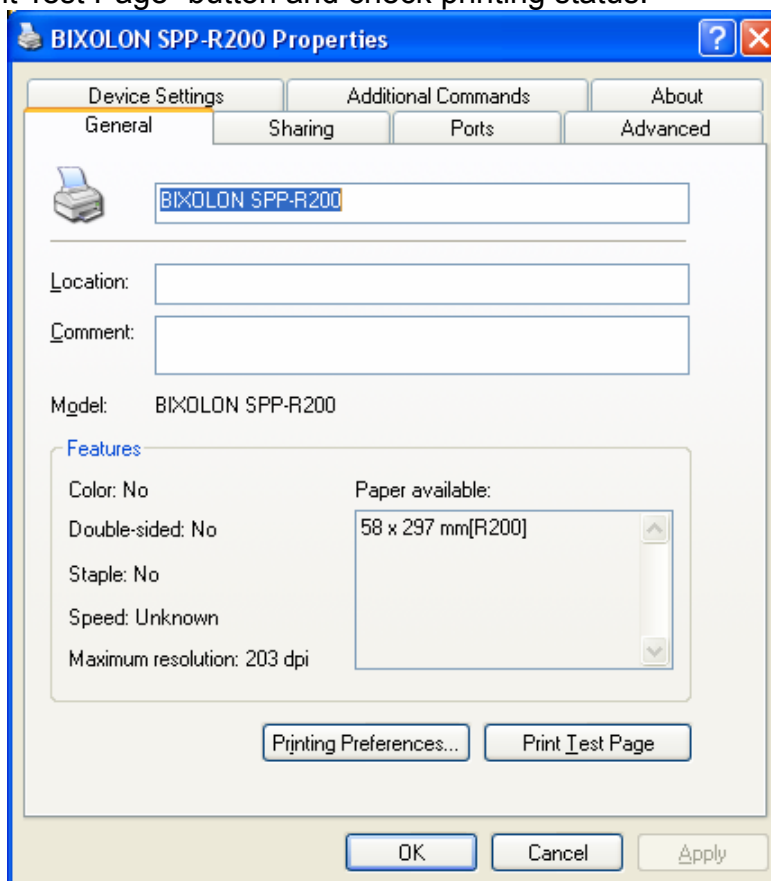
7) Open the printer properties window in the Windows OS.

8) Click the “Port Settings” button in the “Ports” tab.

- 9) Match the communication settings to those of the printer.  
(The communication settings of the printer can be performed by conducting a self-test.)



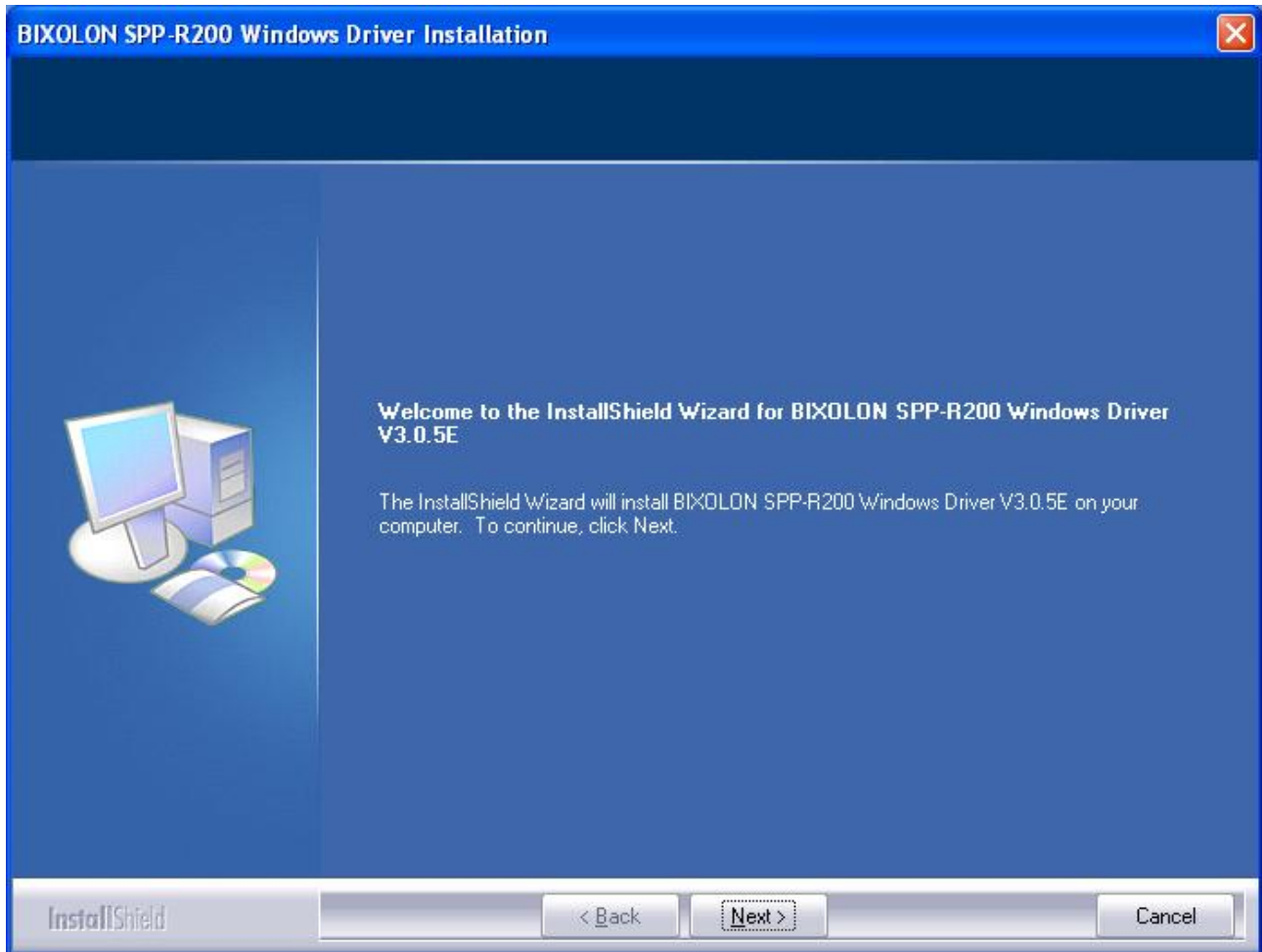
- 10) Click the “Print Test Page” button and check printing status.



- 11) Proper installation of the driver is indicated if the test page is printed normally.

**4-2-2 Via USB Port**

- 1) Double-click the Windows Driver installation file (SPP-R200\_Vx.x.xx.exe).
- 2) Click the “Next” button.





3) Select USB and click the "Next" button.



4) When the following message box appears, click the "Continue Anyway" button.



5) Click the "OK" button.

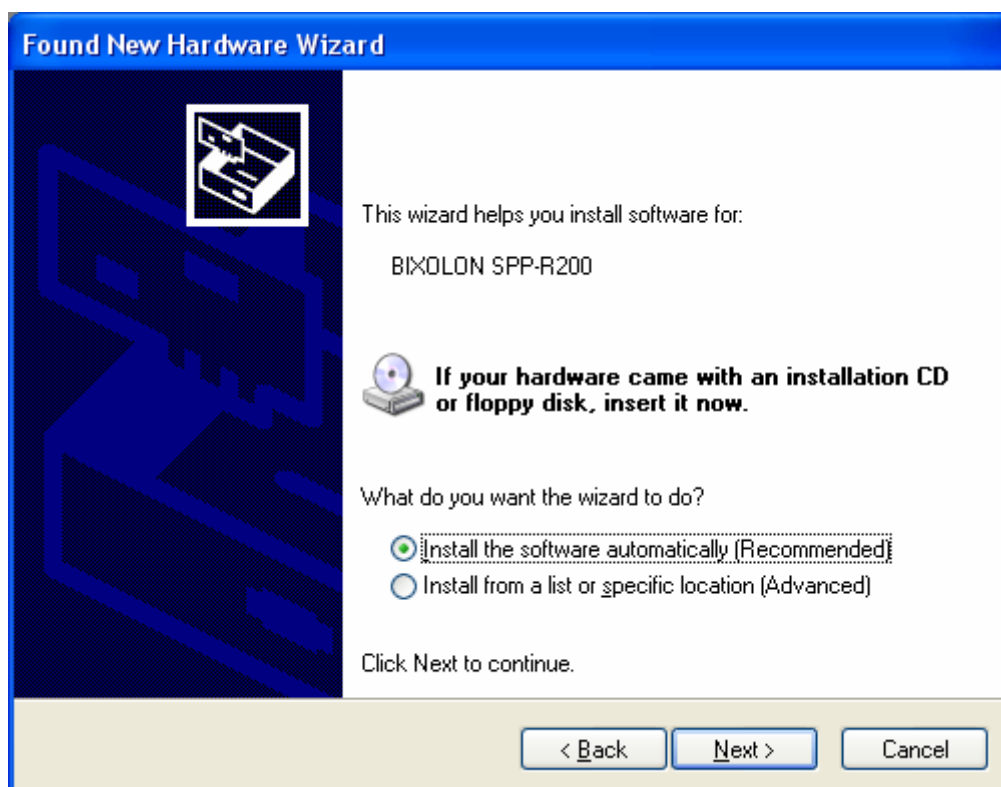


6) Turn on the printer.

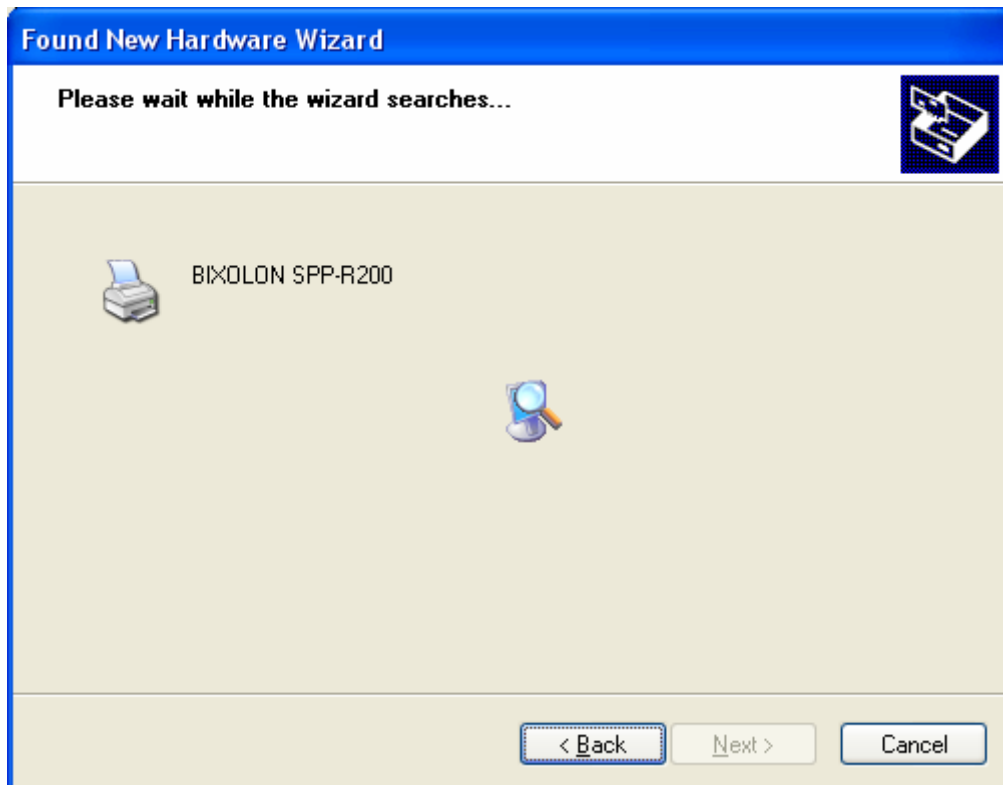
- 7) When the New Hardware Wizard appears for the installation of the Windows Driver, select the option as shown below and click the “Next” button.



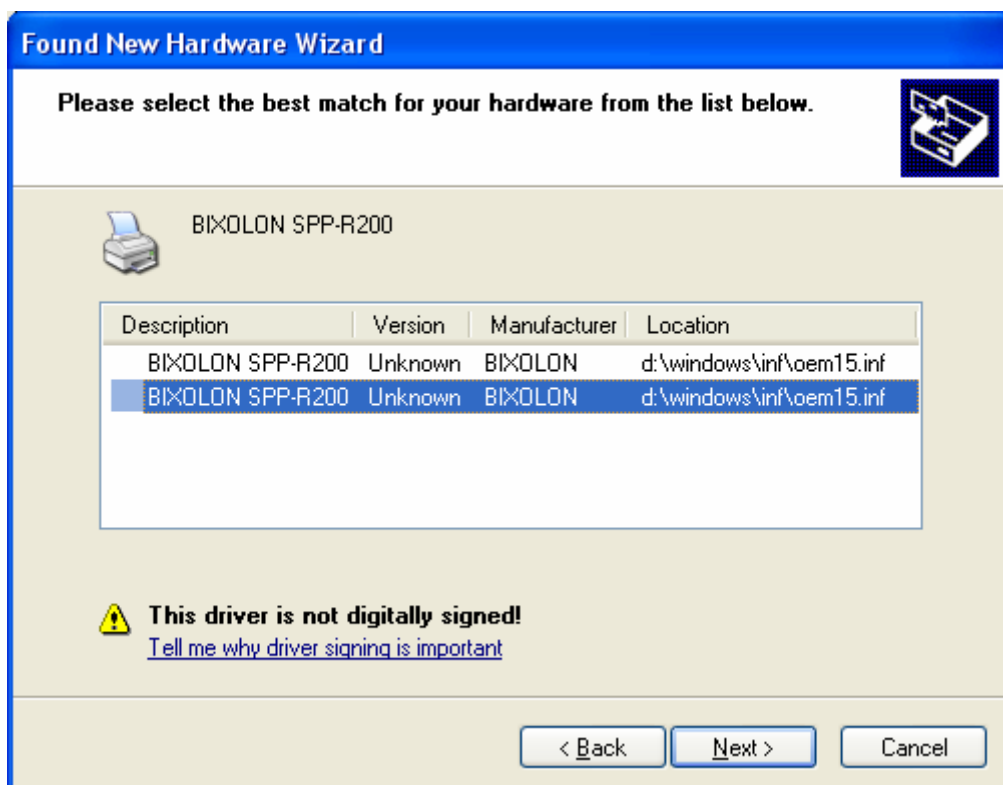
- 8) Click the “Next” button.



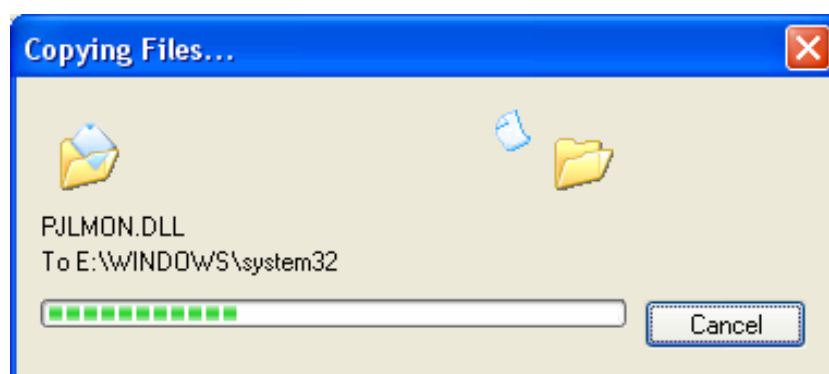
9) Click the “Next” button.



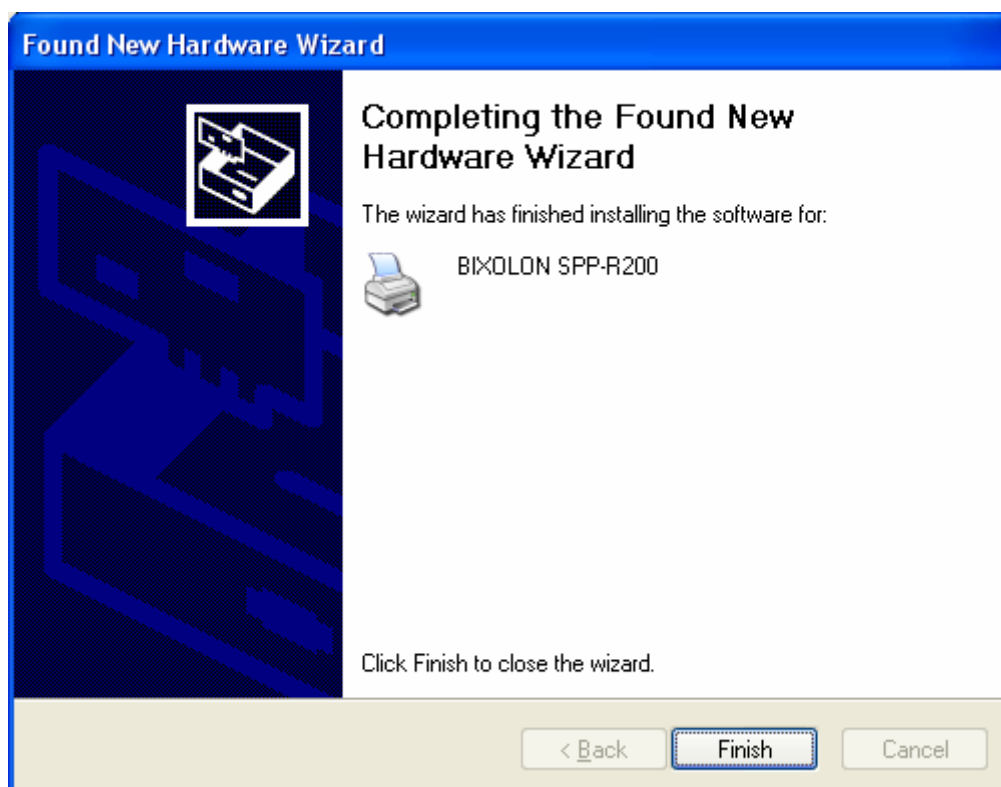
10) Click the “Next” button.



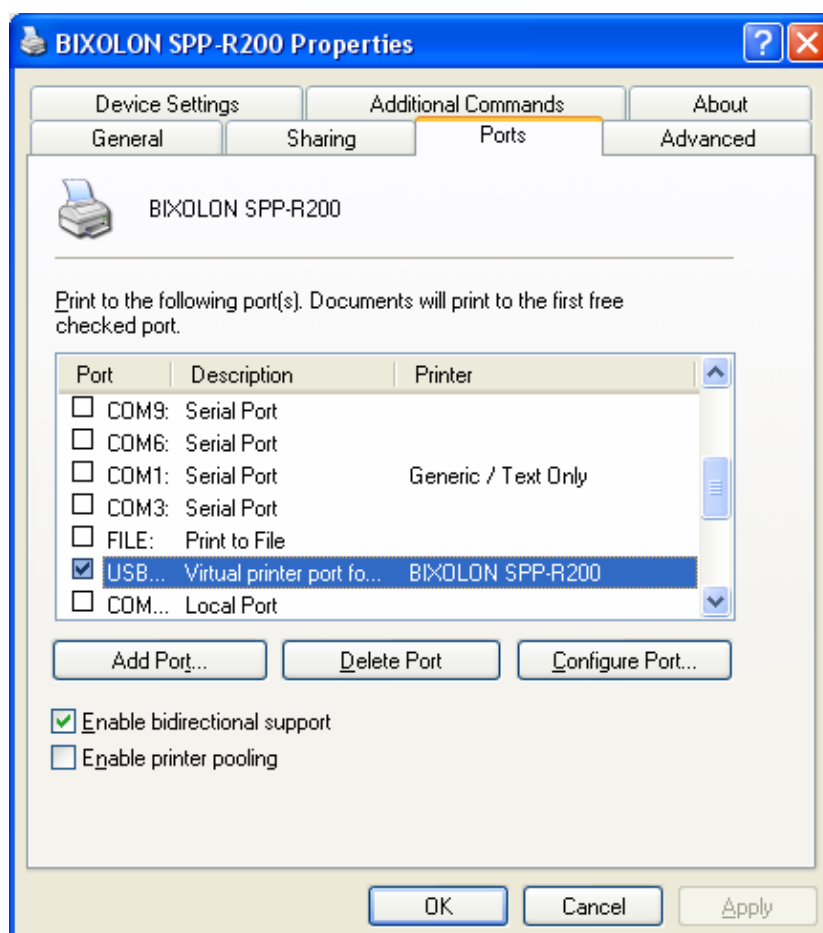
11) Click the “Continue Anyway” button.



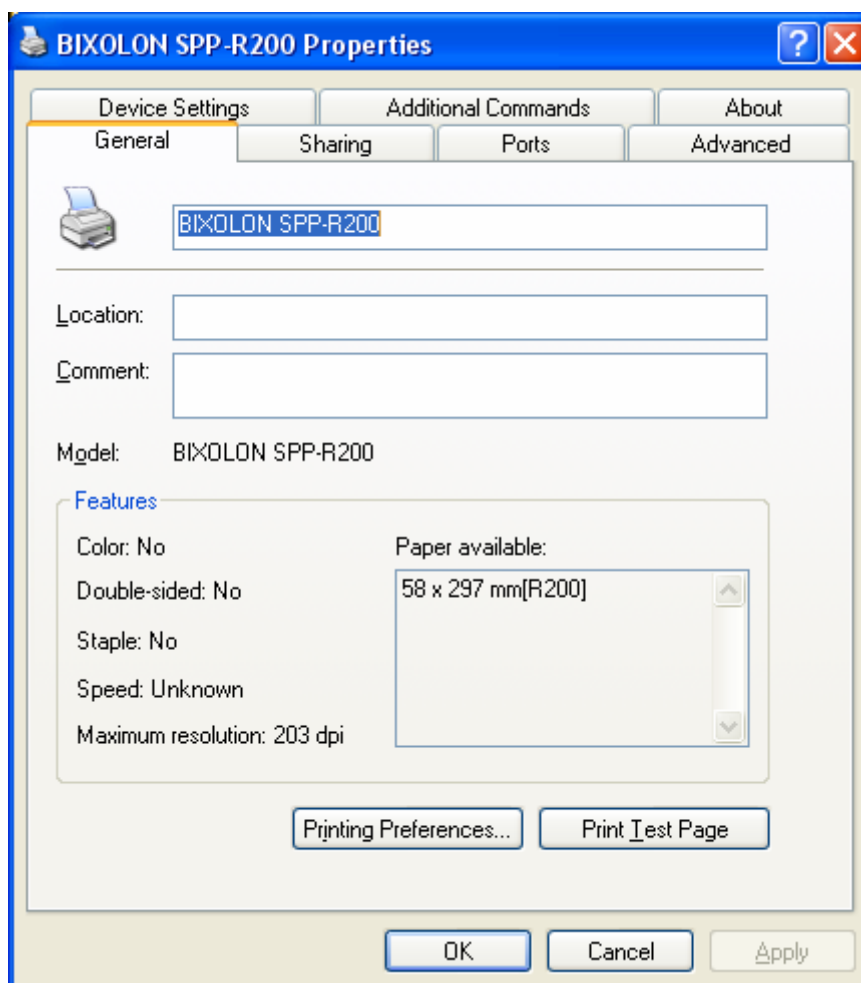
12) Click the “Finish” button.



13) The USB Port setting can be confirmed in the Windows Driver properties.



14) Click the “Print Test Page” button and check printing status.

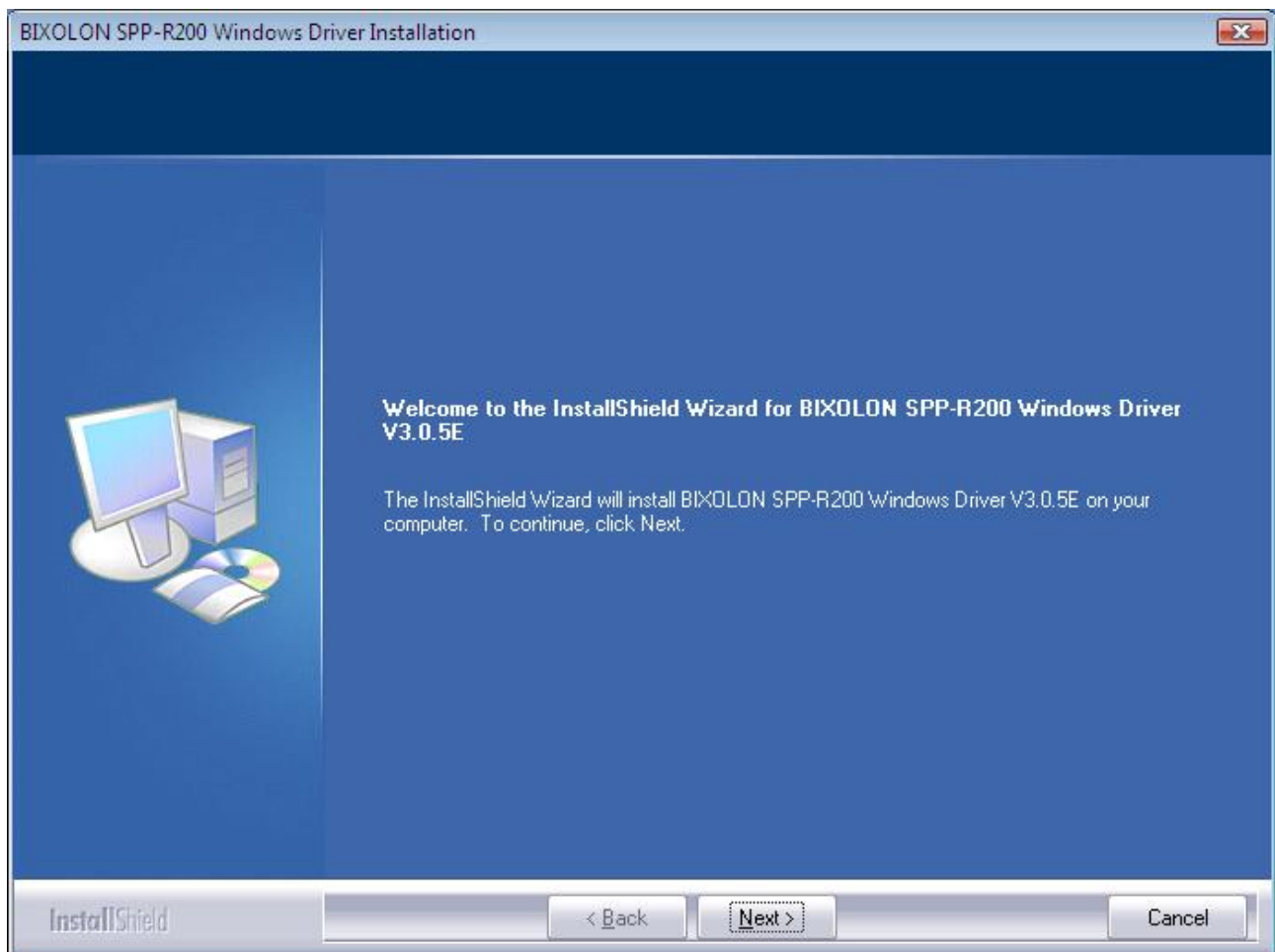


15) Proper installation of the driver is indicated if the test page is printed normally.

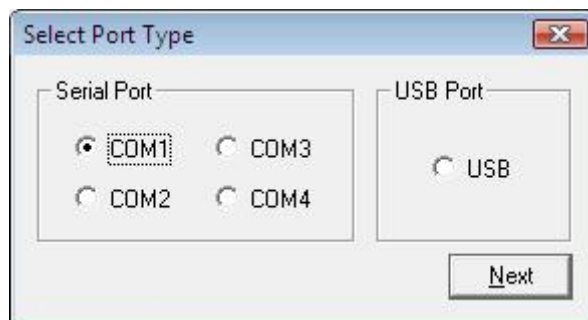
**4-3 Installing on Windows VISTA/2008 Sever/7****4-3-1 Via Serial Port or Bluetooth**

1) Double-click the Windows Driver installation file (SPP-R200\_Vx.x.xx.exe).

2) Click the “Next” button.



3) Select the COM port to be used and click the “Next” button.



4) If using Bluetooth, click the “Yes” button.

- Click “No” if using a Serial port.
- To use Bluetooth, first install the corresponding product software.  
(Refer to the user manual of the corresponding product.)



\* Select the Bluetooth Driver to be used.

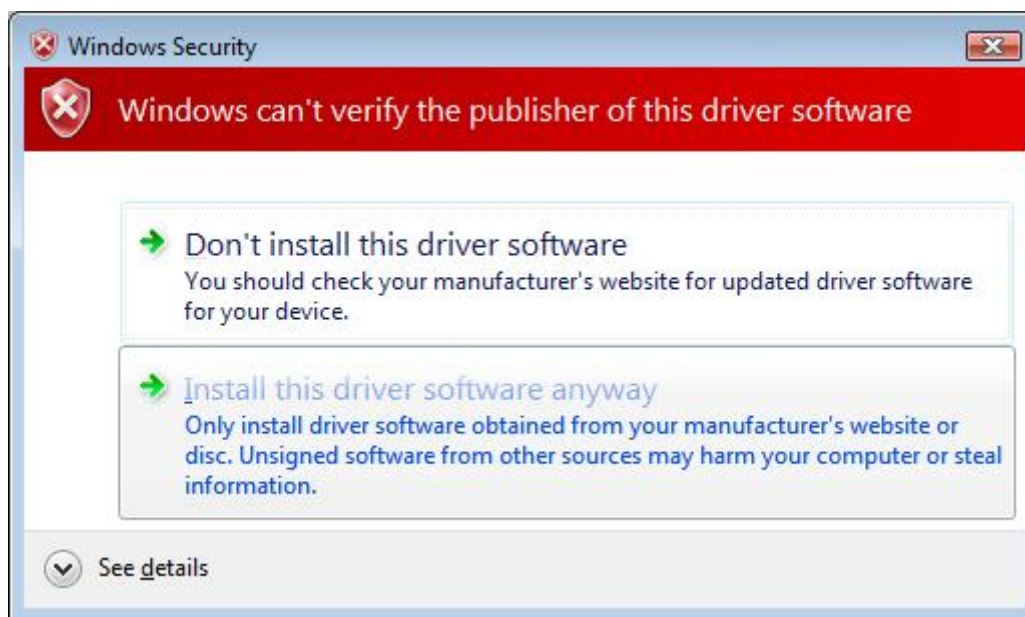
“Yes”: to use an IVT, Broadcom Driver

“No”: to use a driver supplied by the Windows OS





- 5) When the following message box appears, click the “Install this driver software anyway” button.



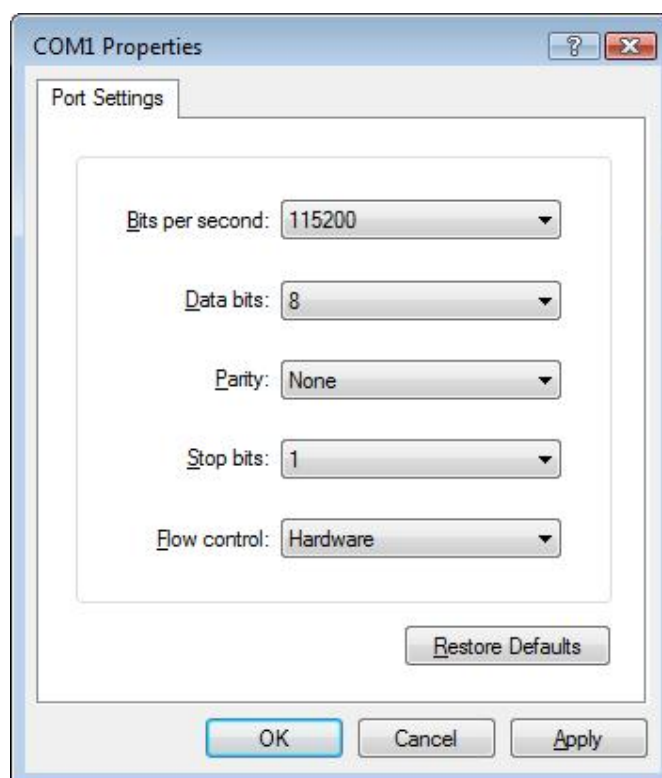
- 6) Clicking the "Yes" button will reboot the PC.



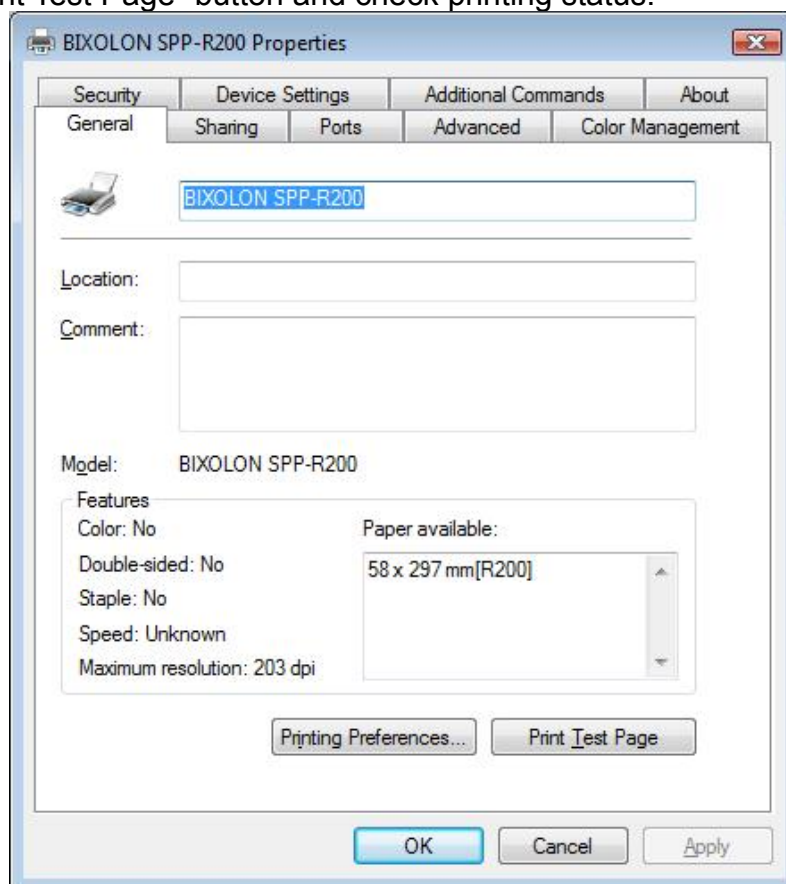
- 7) Open the printer properties window in the Windows OS.

- 8) Click the “Port Settings” button in the “Ports” tab.

- 9) Match the communication settings to those of the printer.  
(The communication settings of the printer can be performed by conducting a self-test.)



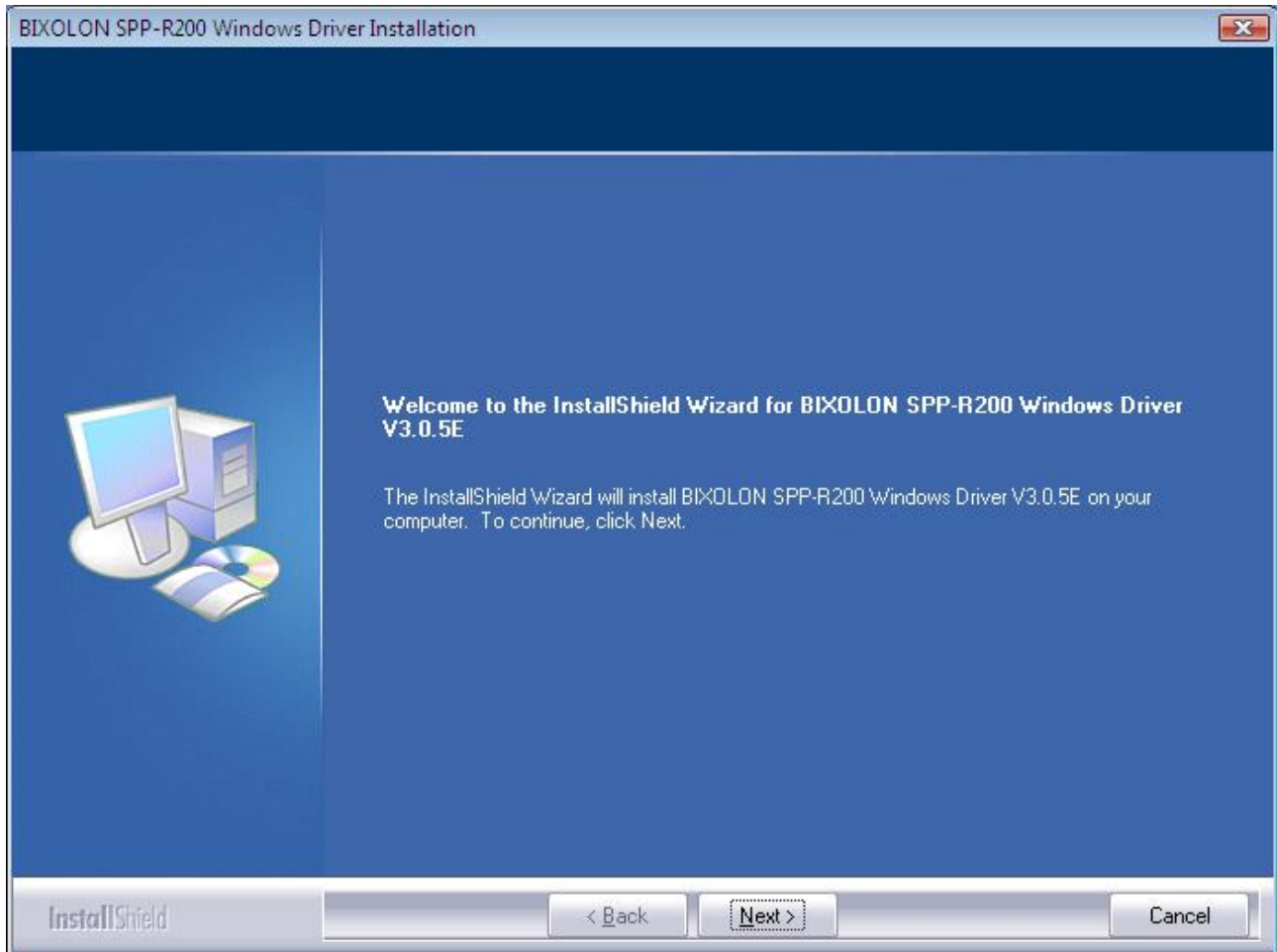
- 10) Click the “Print Test Page” button and check printing status.



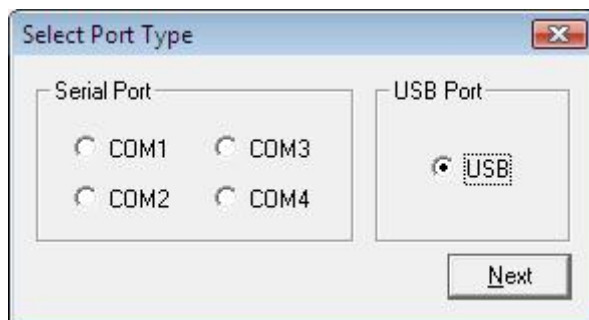
- 11) Proper installation of the driver is indicated if the test page is printed normally.

#### 4-3-2 Via USB Port

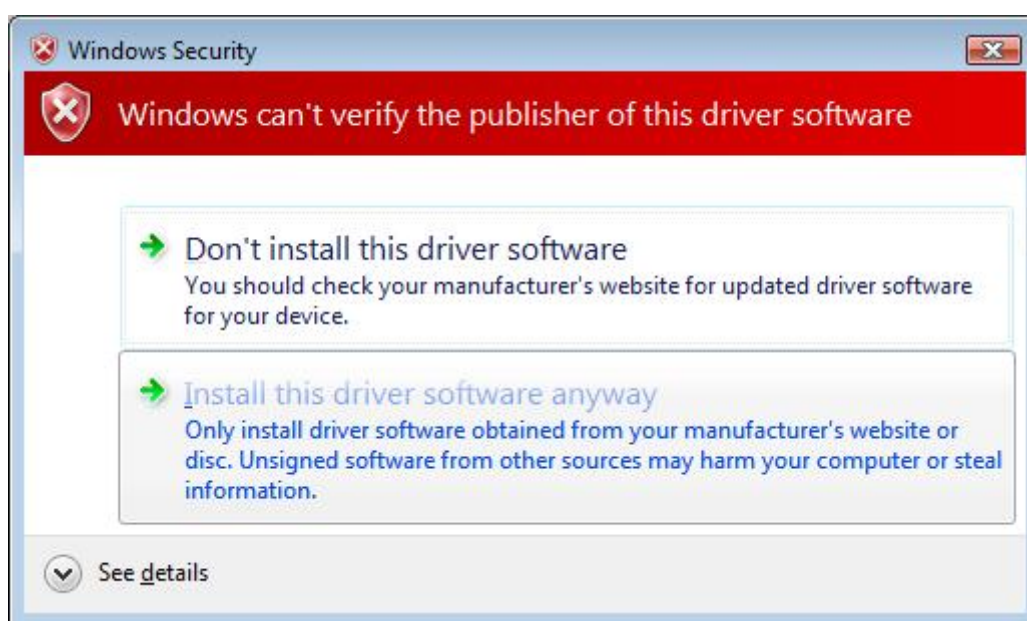
- 1) Double-click the Windows Driver installation file (SPP-R200\_Vx.x.xx.exe).
- 2) Click the “Next” button.



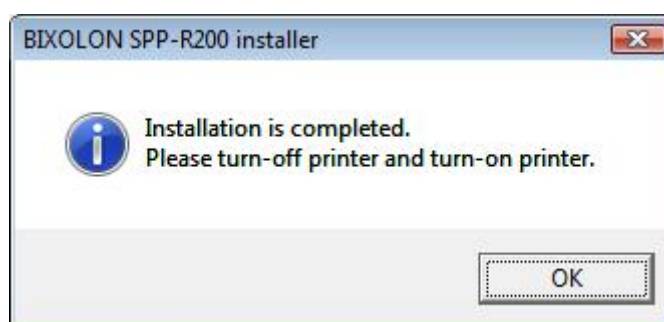
3) Select USB and click the "Next" button.



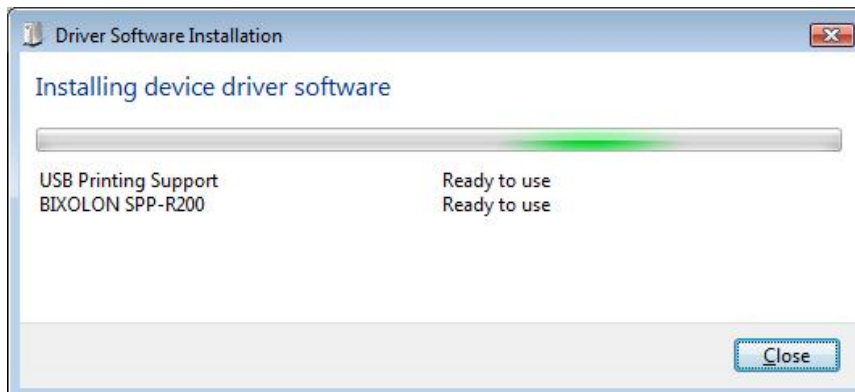
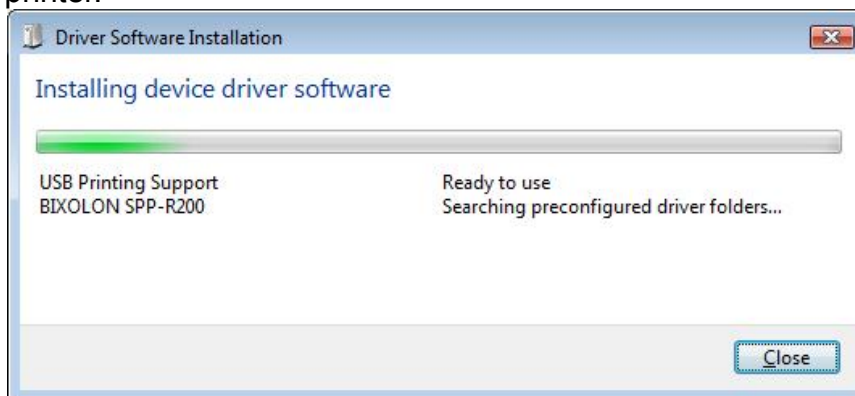
4) When the following message box appears, click the "Install this driver software anyway" button.



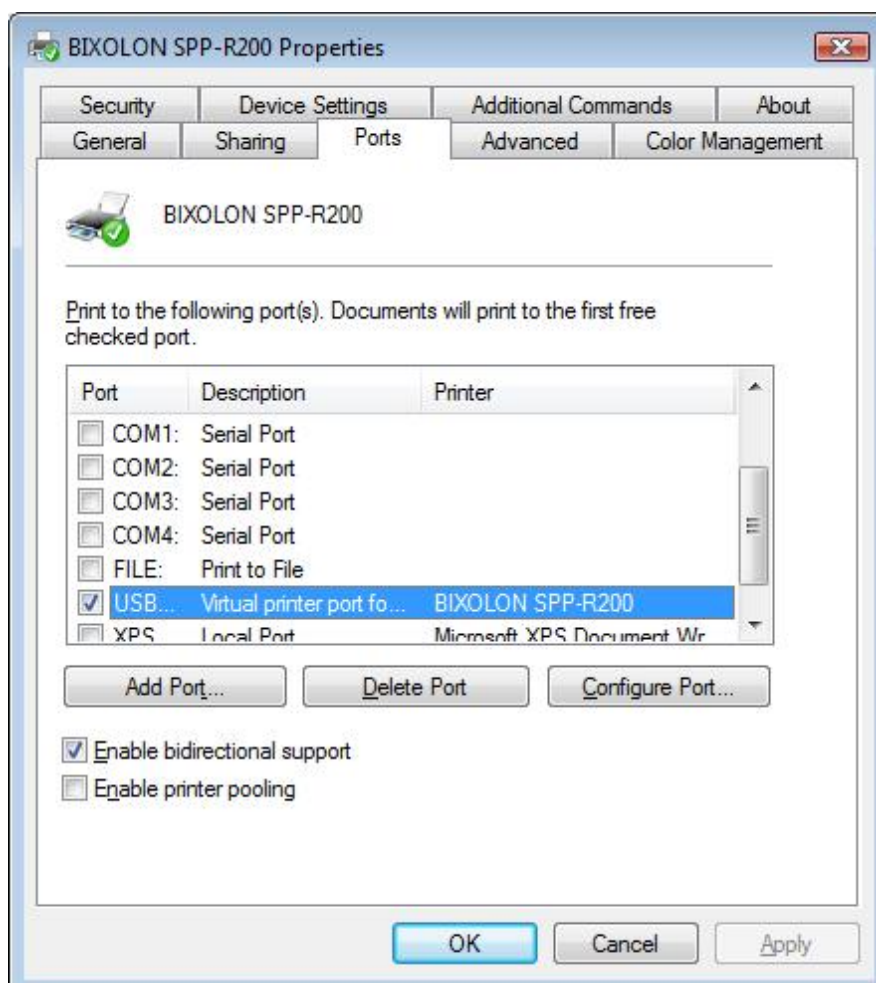
5) Click the "OK" button.



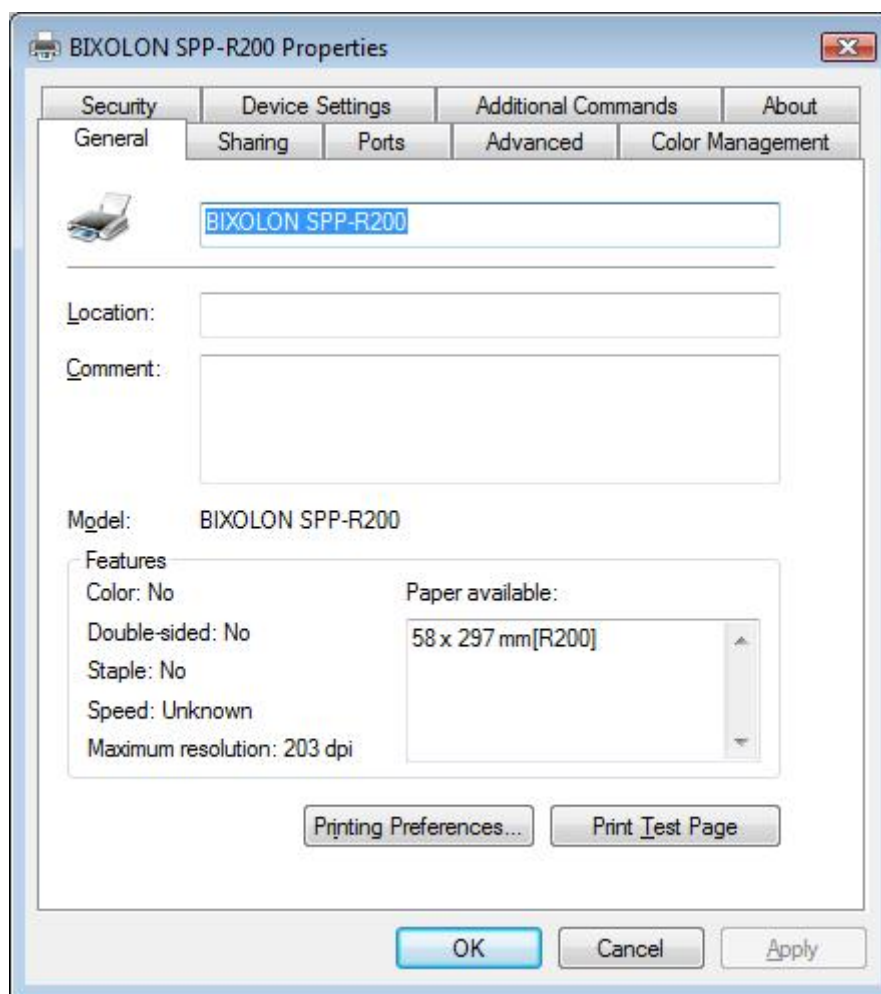
6) Turn on the printer.



7) The USB Port setting can be confirmed in the Windows Driver properties.



8) Click the “Print Test Page” button and check printing status.



9) Proper installation of the driver is indicated if the test page is printed normally..

## 5. Detailed Windows Driver Settings

The following functions can be set in detail after the Windows Driver installation is complete.

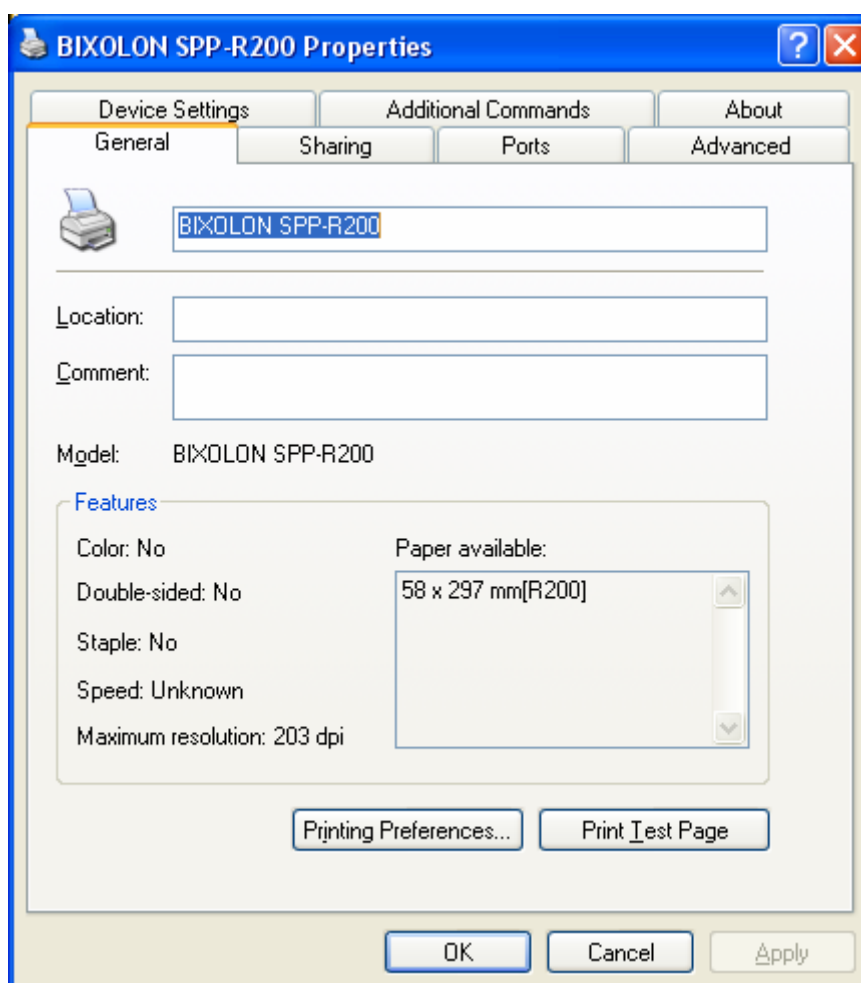
### 5-1 Paper Supply Method

The printer structure is such that the print head, which carries out printing, and the cutter, which cuts the printing paper, are separated. After printing, the location of the end section can be adjusted as follows.

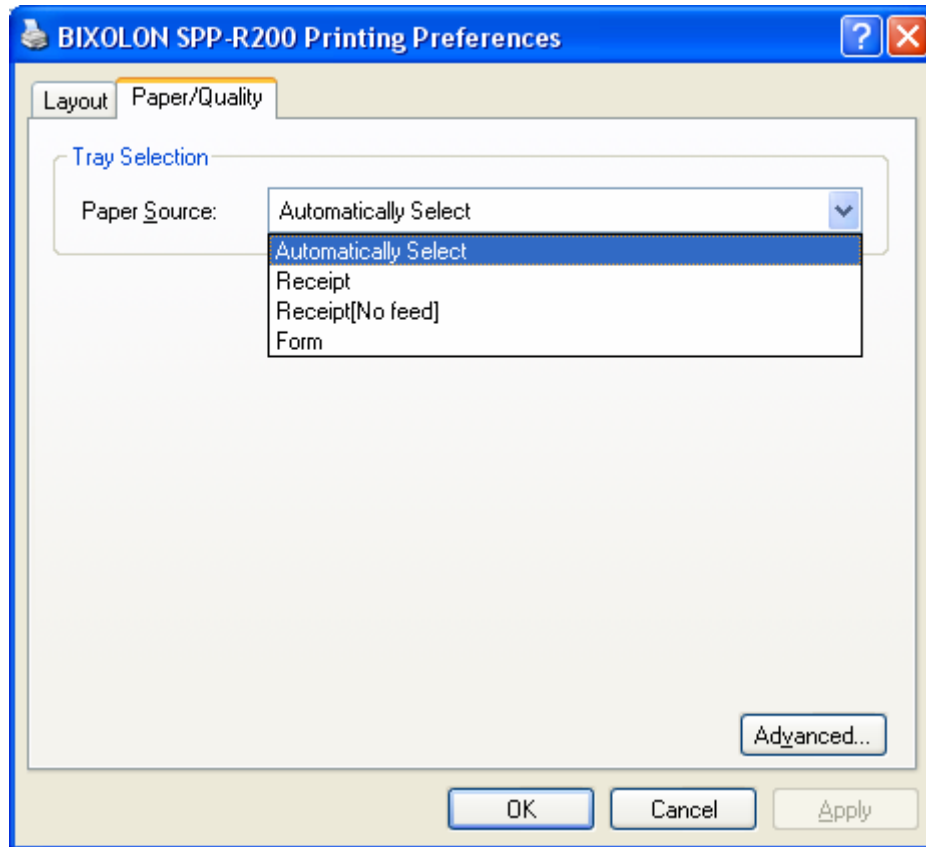
- Automatically Select: Select the "Receipt" automatically.
- Receipt: Printed text is transferred up to the cutter (manual cutter).
- Receipt [No feed]: Printed text is transferred up to the next line only.  
(minimum transfer: 0x0A).
- Form: For long print jobs, printed text is transferred according to the Receipt option per selected paper size.

Detailed setting can be done as follows.

- 1) Open the printer properties window in the Windows OS.



- 2) Click the "Printing Preferences" button in the "General" tab.
- 3) Select the desired setting in the "Paper/Quality" tab.  
(Resolution is fixed at 203 × 203.)





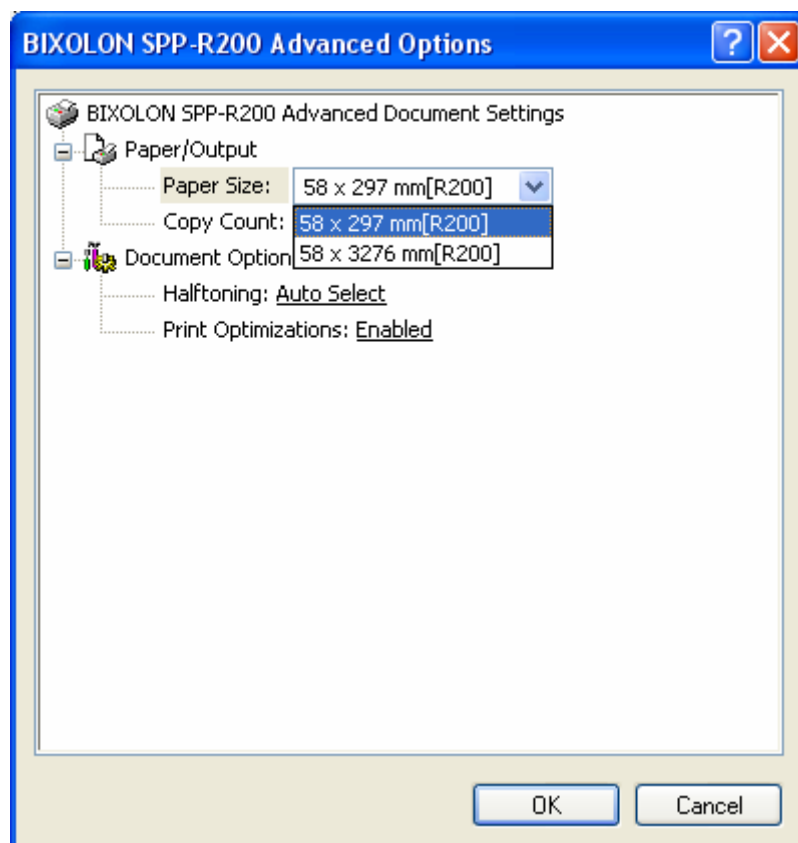
## 5-2 Paper Size

The paper sizes available in the Windows Driver are as follows.

- 58 × 297 mm [R200]
- 58 × 3276 mm [R200]

Detailed setting can be done as follows.

- 1) Open the printer properties window in the Windows OS.
- 2) Click the "Printing Preferences" button in the "General" tab.
- 3) Select the "Paper/Quality" tab, and click the "Advanced" button.  
Select the desired setting.



### 5-3 Additional Commands

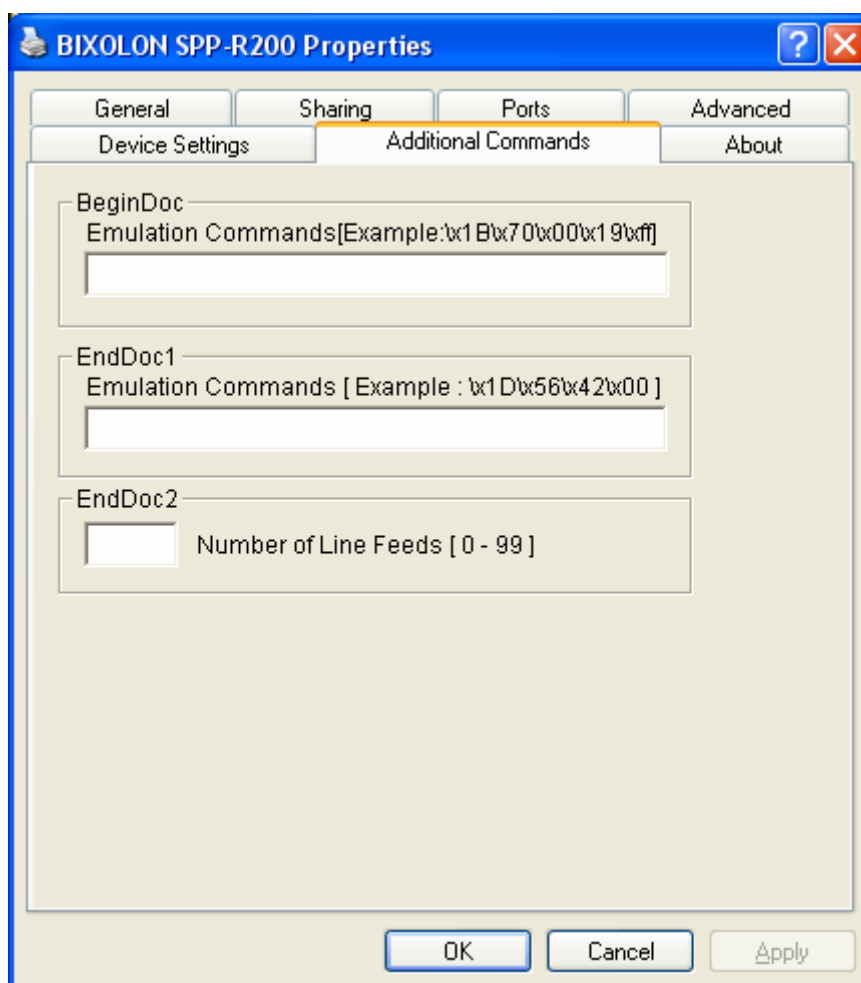
The Windows Driver serves to receive the content for print from an application and send it to the printer. The Additional Commands function allows for the addition of desired commands at the beginning or end of the print content sent to the printer.

The command functions available are as follows.

- BeginDoc: addition of command at the beginning of the print content
- EndDoc1: addition of command at the end of the print content
- EndDoc2: addition of line feeding at the end of the print content

Detailed setting can be done as follows.

- 1) Open the printer properties window in the Windows OS.
- 2) Click the "Additional Commands" tab.



- 3) If the user wishes to open Cash Drawer 1 prior to printing, enter “\x1B\x70\x00\x19\xff” in the ”BeginDoc” space and click the “OK” button.
- 4) If the user wishes to open Cash Drawer 1 at the end of printing, enter “\x1B\x70\x00\x19\xff” in the ”EndDoc1” space and click the “OK” button.
- 5) If the user wishes to feed three lines at the end of printing, enter “3” in the ” EndDoc2” space and click the “OK” button.

For more information on the hexadecimals that can be entered in ”BeginDoc” and ” EndDoc1”, refer to the Control Commands Manual.

## 6. Windows Driver Specifications

### 6-1 Fonts

The Windows Driver of the printer supports the fonts listed below.

Printing is done at faster speed when using the fonts below as opposed to the Windows fonts of the OS.

Printer Fonts			Character Size (dot)	Sizes (point)
FontA1x1	FontA1x1[Ext.]	FontA1x1[255]	FontA1x1(12x24)	8.5
FontA1x2	FontA1x2[Ext.]	FontA1x2[255]	FontA1x2(12x48)	17
FontA2x1	FontA2x1[Ext.]	FontA2x1[255]	FontA2x1(24x24)	8.5
FontA2x2	FontA2x2[Ext.]	FontA2x2[255]	FontA2x2(24x48)	17
FontA2x4	FontA2x4[Ext.]	FontA2x4[255]	FontA2x4(24x96)	34
FontA4x2	FontA4x2[Ext.]	FontA4x2[255]	FontA4x2(48x48)	17
FontA4x4	FontA4x4[Ext.]	FontA4x4[255]	FontA4x4(48x96)	34
FontA4x8	FontA4x8[Ext.]	FontA4x8[255]	FontA4x8(48x192)	68
FontA8x4	FontA8x4[Ext.]	FontA8x4[255]	FontA8x4(96x96)	34
FontA8x8	FontA8x8[Ext.]	FontA8x8[255]	FontA8x8(96x192)	68
FontB1x1	FontB1x1[Ext.]	FontB1x1[255]	FontB1x1(9x24)	6
FontB1x2	FontB1x2[Ext.]	FontB1x2[255]	FontB1x2(9x48)	12
FontB2x1	FontB2x1[Ext.]	FontB2x1[255]	FontB2x1(18x24)	6
FontB2x2	FontB2x2[Ext.]	FontB2x2[255]	FontB2x2(18x48)	12
FontB2x4	FontB2x4[Ext.]	FontB2x4[255]	FontB2x4(18x96)	24
FontB4x2	FontB4x2[Ext.]	FontB4x2[255]	FontB4x2(36x48)	12
FontB4x4	FontB4x4[Ext.]	FontB4x4[255]	FontB4x4(36x96)	24
FontB4x8	FontB4x8[Ext.]	FontB4x8[255]	FontB4x8(36x192)	48.5
FontB8x4	FontB8x4[Ext.]	FontB8x4[255]	FontB8x4(72x96)	24
FontB8x8	FontB8x8[Ext.]	FontB8x8[255]	FontB8x8(72x192)	48.5

Printer Fonts are defined as follows.

#### 1) FontA1x2

- ANSI Character code support (Code Page 16: 1252)
- Character size (dot): 12 x 24 (double height)
- Sizes (point): 17

#### 2) FontA1x2[Ext]

- IBM expansion Character code support (Code Page 0: 437)
- Character size (dot): 12 x 24 (double height)
- Sizes (point): 17

#### 3) FontA1x2[255]

- Buyer exclusive code support (Code Page 255)
- Character size (dot): 12 x 24 (double height)
- Sizes (point): 17

**6-2 Special Functions**

The Windows Driver supports the special functions indicated below.  
 These special functions are available when using the characters after the “FontControl” font is selected.

This function is not an ordinary character printing function. Take special care.

Character	Special Function
5	Prints HT (0 x 09)
6	Prints LF (0 x 0A)
7	Prints CR (0 x 0D)
i	Prints double-sized color image saved in the 00 address
j	Prints double-sized color image saved in the 01 address
k	Prints double-sized color image saved in the 02 address
l	Prints double-sized color image saved in the 03 address
m	Prints double-sized color image saved in the 04 address
p	Does not add HRI characters to the barcode
q	Adds HRI characters in FontA above the barcode
r	Adds HRI characters in FontA below the barcode
s	Adds HRI characters in FontB above the barcode
t	Adds HRI characters in FontB below the barcode
w	Aligns text to the left
x	Aligns text to the center
y	Aligns text to the right
R	Prints the color image saved in the 00 address
S	Prints the color image saved in the 01 address
T	Prints the color image saved in the 02 address
U	Prints the color image saved in the 03 address
V	Prints the color image saved in the 04 address

**1) Sample Use**

If the “FontControl” font is selected and 6 is entered, the “LF” (Line Feeding) operation is activated.

(does not entail the printing of the character “6”)

**2) “FontControl” Font Function**

Printer Font for Special Function	Function	Size (point/dot)
FontControl	Justification (Left/Center/Right) Output HT, Output LF, Output CR Barcode Printing Print NV Graphic Data	(8.5 / 12x24)

### 6-3 Barcodes

The Windows Driver supports the barcodes indicated below.  
 This function is available when entering barcode data after selecting “Printer Font Name”.  
 In addition, the “FontControl” font can be used to add HRI characters.

Printer Font Name	Size	Supported Characters
Codabar	18/35.5/53/71	Numeric: 0~9 Symbols: \$, +, -, ., /, : Letters: A~D
Code39	18/35.5/53/71	Numeric: 0~9 Symbols: \$, +, -, ., / Letters: A~Z
JAN13(EAN)	18/35.5/53/71	Numeric: 0~9
JAN8(EAN)	18/35.5/53/71	Numeric: 0~9
ITF	18/35.5/53/71	Numeric: 0~9
UPC-A	18/35.5/53/71	Numeric: 0~9
UPC-E	18/35.5/53/71	Numeric: 0~9
Code93	18/35.5/53/71	ASCII CODE: 0~127
Code128	18/35.5/53/71	ASCII CODE: 0~127

#### 1) Sample Use

Select “Code39” and Size “18”, and then enter “1234”.  
 The barcode corresponding to “1234” is printed.

#### 2) When Using Code128

Select “Code128” and Size “18”, and then enter “{B1234”.  
 The barcode corresponding to “1234” is printed.

When using “Code128”, characters, such as “{A”, “{B”, “{C”, must be included before the input data.

### 6-4 Two-Dimensional Barcodes

The Windows Driver supports the following two-dimensional barcodes.

- PDF417
- QR Code

Usage is identical to that for barcodes.

## **7. Use of Windows Driver**

### **7-1 Use of Visual Basic**

This section explains the use of the Windows Driver with Visual Basic to control the printer (SPP-R200).

Sample programs are saved together if the Windows Driver is installed. Take note.

#### **7-1-1 Windows Driver Selection**

The following code is an example of the selection of the “BIXOLON SPP-R200” Windows Driver.

```
For Each prnPrinter In Printers
    If prnPrinter.DeviceName = “BIXOLON SPP-R200” Then
        Set Printer = prnPrinter
    Exit For
End If
Next
```

### 7-1-2 Test Printing

The following code is an example of the printing of Arial Test via the Windows font, and FontA1x1Test via the printer font.

```
'Print in Windows font
Printer.FontSize = 9
Printer.FontName = "Arial"
Printer.Print "Arial Test"

'Print in printer font
Printer.FontSize = 8.5
Printer.FontName = "FontA1x1"
Printer.Print "FontA1x1Test"

Printer.EndDoc
```

### 7-1-3 Barcode Printing

The following code is an example of the printing of the JAN8 (EAN) barcode.

```
'Print Bar Code.
Printer.FontSize = 18

Printer.FontName = "JAN8 (EAN)"
Printer.Print "1234567"

Printer.EndDoc
```

### 7-1-4 Two-Dimensional Barcode Printing

The following code is an example of the printing of the PDF417 two-dimensional barcode.

```
'Print Two-dimensional Codes.
Printer.FontSize = 9.5

Printer.FontName = "PDF417"
Printer.Print "Print Test PDF417"

Printer.EndDoc
```



## 7-2 Use of Wordpad

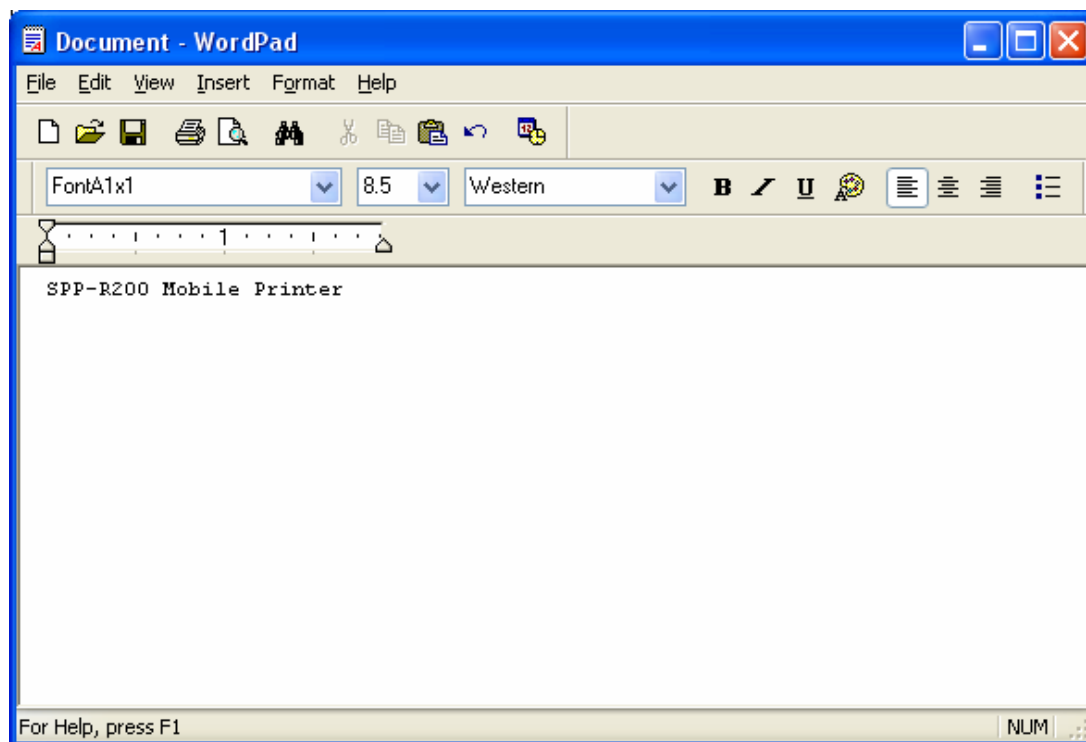
### 7-2-1 Wordpad Environment Settings

After running Wordpad and setting the following conditions, conduct a test.

- Select Printer  
After selecting "Print" from the "File" tab, select the printer (BIXOLON SPP-R200).
- Select Paper Size, Orientation, and Margins  
After selecting "Page Settings" from the "File" tab, select the paper size, orientation, and margins.

### 7-2-2 Text Printing

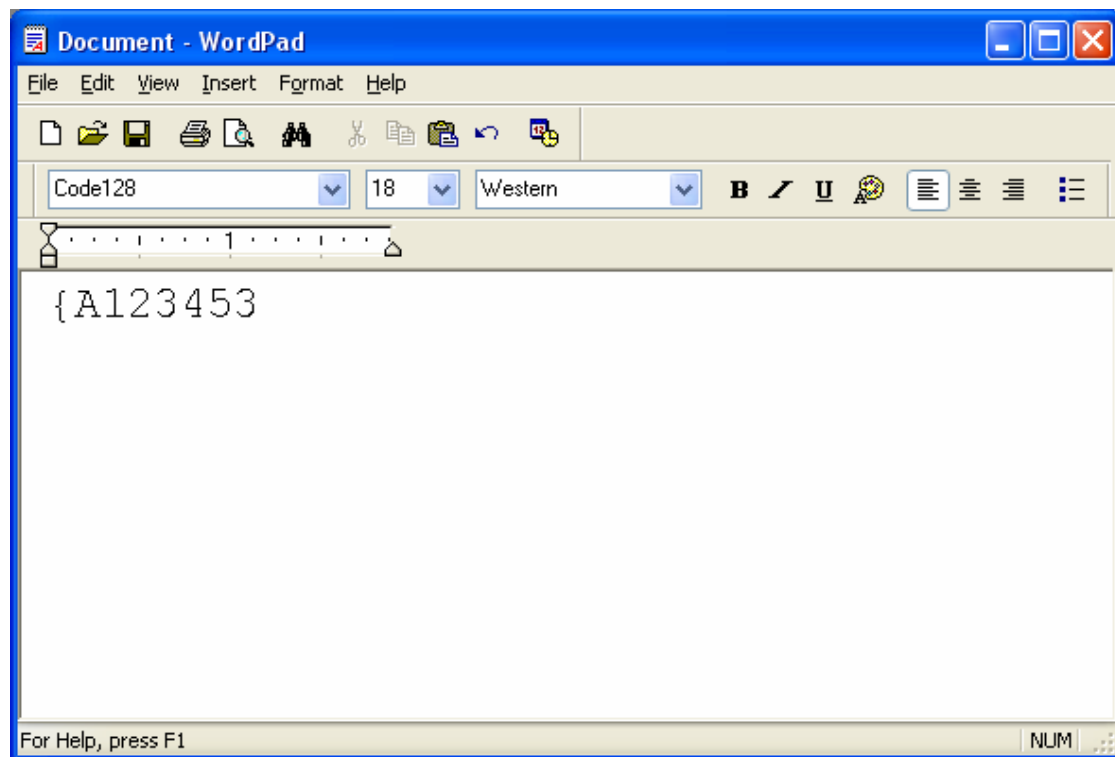
Use the Windows Driver of the printer to run a test.



- 1) Select the desired font from the Font menu (FontA 1x1).
- 2) Select the desired font size (8.5).
- 3) Enter the text to be printed in Wordpad.
- 4) Click the Print button in the toolbar to print.

### 7-2-3 Barcode Printing

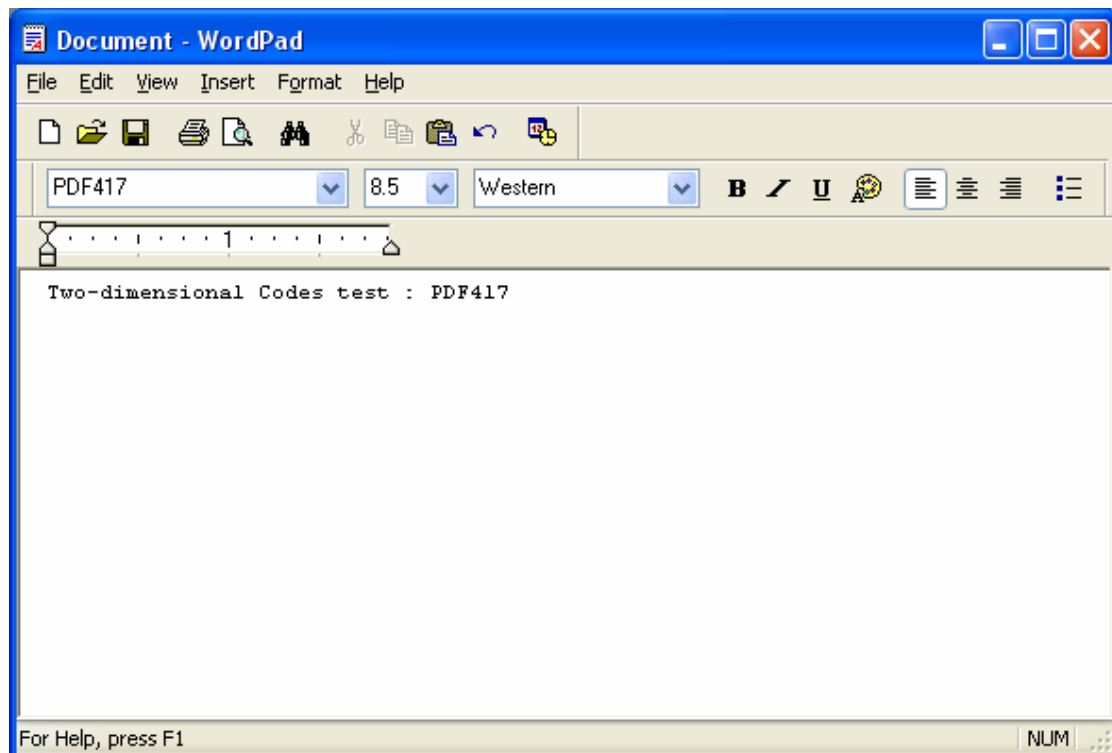
Use the Windows Driver of the printer to print the barcode.



- 1) Select the desired barcode from the Font menu (Code128).
- 2) Select the desired font size (18).
- 3) Enter "{A123435" in Wordpad.
- 4) Click the Print button in the toolbar to print.

## 7-2-4 Two-Dimensional Barcode Printing

Use the Windows Driver of the printer to print the two-dimensional barcode.



- 1) Select the desired two-dimensional barcode from the Font menu (PDF417).
- 2) Select the desired font size (8.5).
- 3) Enter “Two-dimensional Codes Test: PDF417” in Wordpad.
- 4) Click the Print button in the toolbar to print.