

**TOSHIBA**

TOSHIBA POS Terminal

TEC OPOS Control

# Printer OPOS Setup Guide

FIRST Edition: Mar 29, 2012

**TOSHIBA TEC CORPORATION**

---

## **Revision Record**

<b>Rev. No.</b>	<b>Date</b>	<b>Description</b>
V001.000	29 Mar 2012	First Release

---

## Table of Contents

1.	Overview.....	1
1.1	Objectives.....	1
1.2	TEC OPOS Control Components.....	1
1.3	Supported Operating System.....	1
2.	Installation.....	2
2.1	Starting the installer.....	2
2.2	Installation Path selection.....	3
2.3	Installation environment selection.....	3
2.4	Control selection.....	4
2.5	Installation section.....	5
2.6	Finishing Installation.....	5
3.	Silent Installation.....	6
3.1	Silent Install with Default settings.....	6
3.2	Silent Install with change settings.....	7
3.3	Table of error codes.....	9
4.	Default configured value for the OPOS Control.....	10
5.	Uninstallation.....	10
5.1	Starting the uninstallation.....	10
6.	Restrictions.....	11

## Caution

- It is prohibited to copy or transfer a part or whole of this manual without the consent.
- The content of this manual is subject to change without notice in the future.

\*Microsoft, Windows, Windows 2000, Windows XP, WEPOS , Windows Vista, Windows 7, POSReady 2009 and POSReady 7 are trade marks of Microsoft Corporation in the U.S. and other countries.

\*The official name of Windows is Microsoft Windows Operating System.

## 1. Overview

### 1.1 Objectives

The objective of this specification is to explain the procedure to install TEC OPOS Control for Printer.

TEC OPOS Control installs the following controls.

**Printer**

- TRSTA1U Printer Control
- TRSTA1S Printer Control
- TRSTA1L Printer Control
- TRSTA1P Printer Control
- TRSTC10 Printer Control

### 1.2 TEC OPOS Control Components

These 2 components are required for TEC OPOS Control Kits:

- OPOS Control
- Native Driver

The Device Driver is provided to access the unique hardware for TOSHIBA TEC Terminals. Some Controls require the Device Driver to be installed in advance. And the above two components will be installed automatically when the installer is executed.

### 1.3 Supported Operating System

Operating System	32-bit	64-bit
Windows XP Pro (SP3)	✓	
Windows 7	✓	✓
POS Ready 2009	✓	
POS Ready 7	✓	✓
WEPOS 1.1	✓	

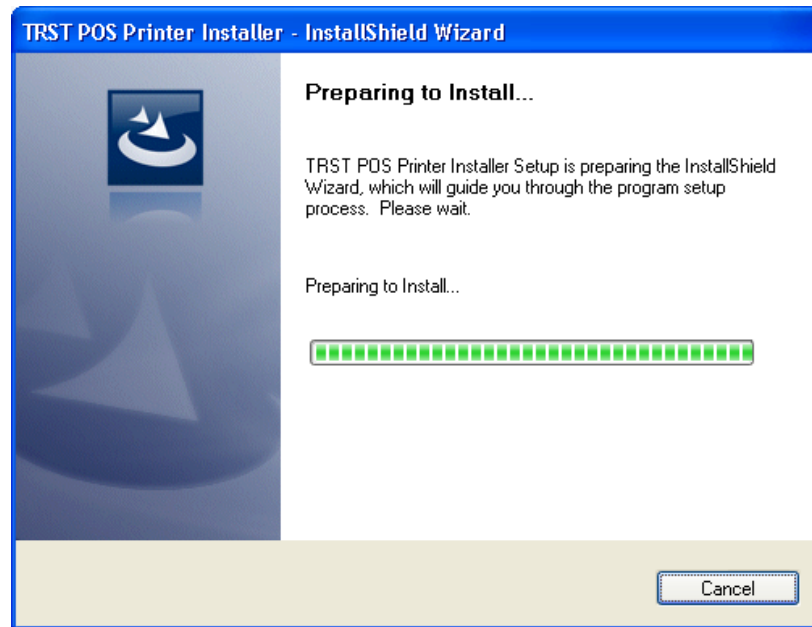
✓ means the OS is supported on the POS models platform

## 2. Installation

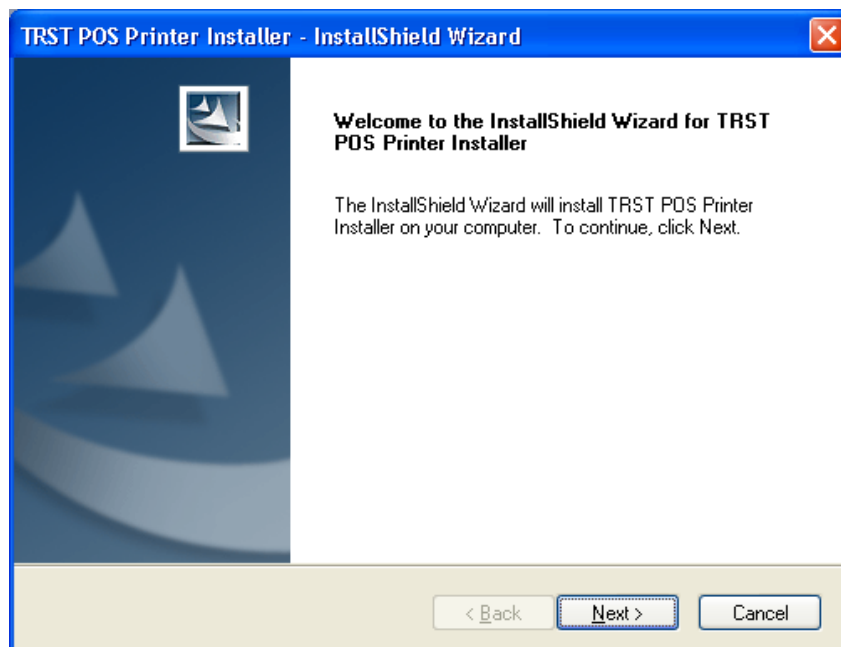
### 2.1 Starting the installer

Execute “OPOS\_TEC\_Printer\_Installer\_x86.exe” file for 32-bit Operating System or “OPOS\_TEC\_Printer\_Installer\_x64.exe” file for 64-bit from “OPOS” folder.

1. The description about the installer will be displayed in a few seconds after startup

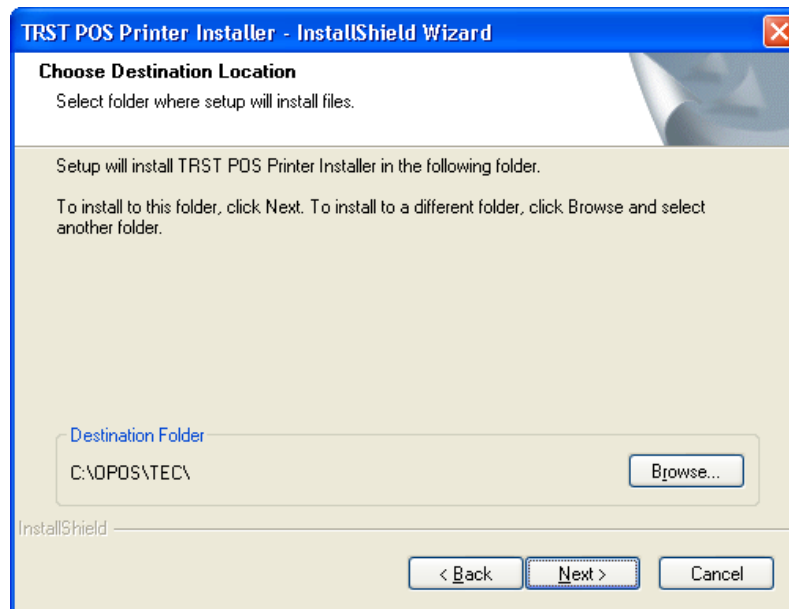


2. Press “Next” button to proceed.



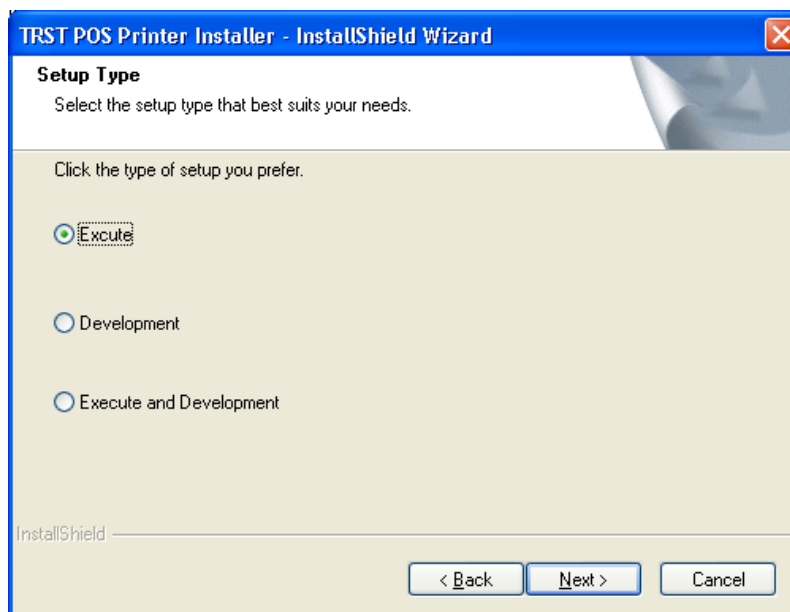
## 2.2 Installation Path selection

Select the installation location by pressing “Browse” button. Then press “Next” to continue. By default the installation location is C:\OPOS\TEC.



## 2.3 Installation environment selection

- i) Installation will continue to “Setup Type” screen.
- ii) Select the setup type and press “Next”.



**Execute**

- Device Control Object
- Service Object
- TEC Control panel
- Test program

**Development**

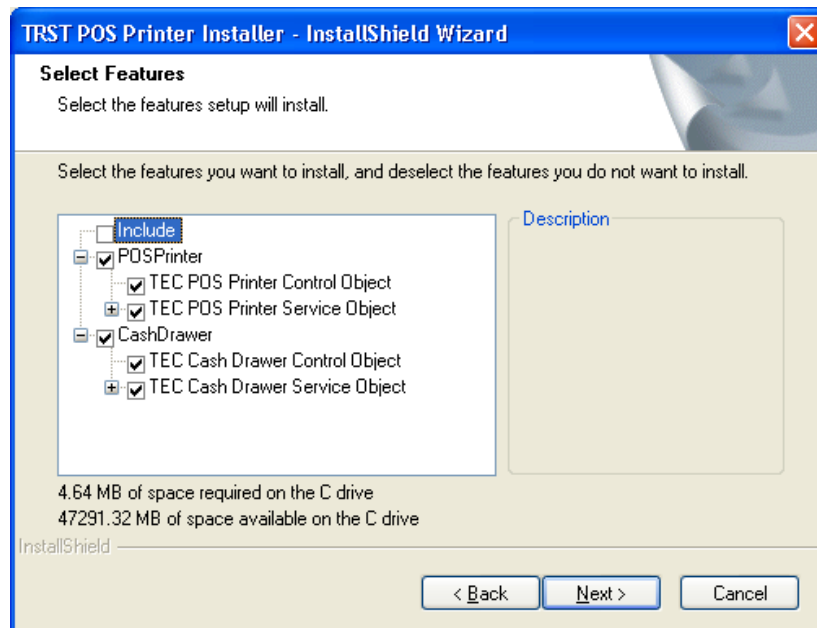
- Device Control Object
- Header file
- TEC Control Panel
- Test program

**Development and Execute**

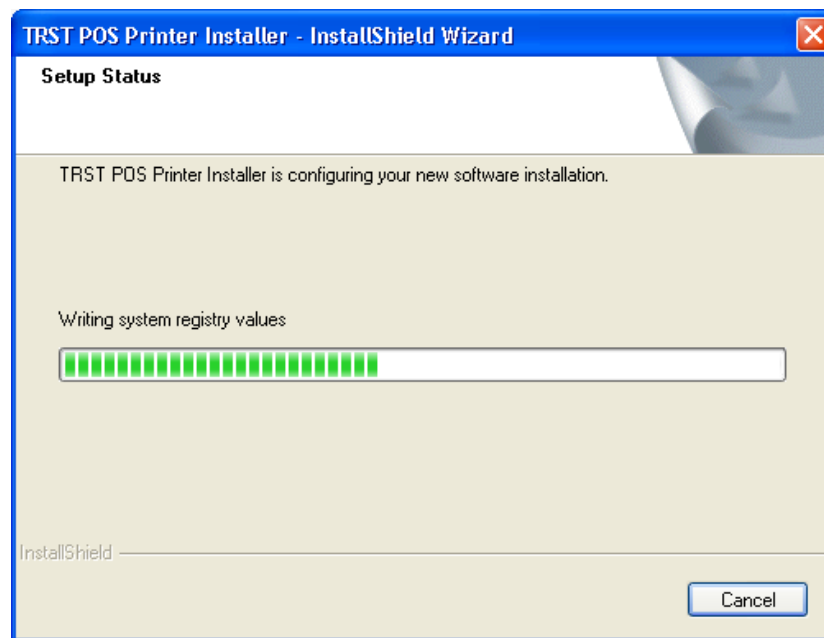
- Device Control Object
- Service Object
- TEC Control panel
- Test program
- Header file

## 2.4 Control selection

In the following screen, select the OPOS Control to be installed. By default, all control is selected. Press “Next” button to start the installation.

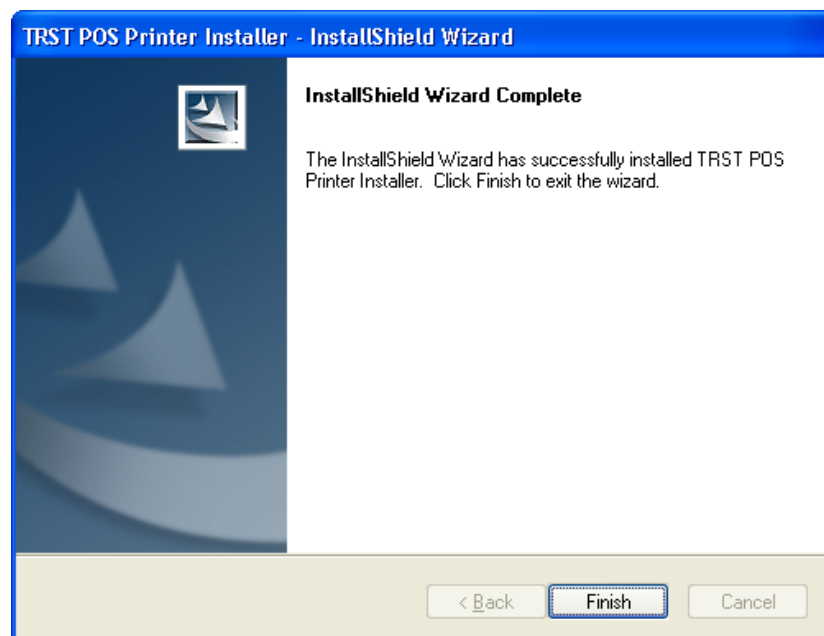


## 2.5 Installation section



## 2.6 Finishing Installation

Click "Finish" button to exit installer.





### 3. Silent Installation

#### 3.1 Silent Install with Default settings

This is the installation using default setting file “OPOSPrinterSetup.ini”. In this case, all of the components will be installed.

##### 3.1.1 Starting the Silent Installation

For 32-bit Operation System (X86 folder)

Name	Date Modified	Type	Size
OPOS_TEC_Printer_Installer_x86.exe	4/9/2012 5:18 PM	Application	4,914 KB
OPOSPrinterSetup.ini	3/30/2012 1:54 PM	Configuration Settings	2 KB
OPOSPrinterSetup.iss	3/28/2012 9:25 AM	ISS File	2 KB
SilentSetup_Printer_OPOS.bat	3/30/2012 1:57 PM	MS-DOS Batch File	1 KB

Run the “SilentSetup\_Printer\_OPOS.bat” in the Kit

For 64-bit Operation System (X64 folder)

Name	Date Modified	Type	Size
cert	4/17/2012 10:13 AM	File Folder	
OPOS_TEC_Printer_Installer_x64.exe	4/9/2012 5:23 PM	Application	5,018 KB
OPOSPrinterSetup.ini	3/30/2012 2:33 PM	Configuration Settings	2 KB
OPOSPrinterSetup.iss	3/30/2012 2:16 PM	ISS File	2 KB
SilentSetup_Printer_OPOS.bat	3/30/2012 2:23 PM	MS-DOS Batch File	1 KB

Run the “SilentSetup\_Printer\_OPOS.bat” in the Kit

## 3.2 Silent Install with change settings

This is the installation using customized setting file "OPOSPrinterSetup.ini". In this case, you need to edit the setting file.

### 3.2.1 Open the setting file OPOSPrinterSetup.ini with text editor

For 32-bit Operating System (X86 folder)

Name	Date Modified	Type	Size
OPOS_TEC_Printer_Installer_x86.exe	4/9/2012 5:18 PM	Application	4,914 KB
OPOSPrinterSetup.ini	3/30/2012 1:54 PM	Configuration Settings	2 KB
OPOSPrinterSetup.iss	3/28/2012 9:25 AM	ISS File	2 KB
SilentSetup_Printer_OPOS.bat	3/30/2012 1:57 PM	MS-DOS Batch File	1 KB

For 64-bit Operating System (X64 folder)

Name	Date Modified	Type	Size
cert	4/17/2012 10:13 AM	File Folder	
OPOS_TEC_Printer_Installer_x64.exe	4/9/2012 5:23 PM	Application	5,018 KB
OPOSPrinterSetup.ini	3/30/2012 2:33 PM	Configuration Settings	2 KB
OPOSPrinterSetup.iss	3/30/2012 2:16 PM	ISS File	2 KB
SilentSetup_Printer_OPOS.bat	3/30/2012 2:23 PM	MS-DOS Batch File	1 KB

### 3.2.2 Edit OPOSPrinterSetup.ini (Self-explanatory setting file)

```

*****
;
;This is the file for setting silent installation.
*****
;

;-----
;Please select Drivers you want to install.
;
; (Param) (Mean)
; 301: Execute
; 302: Development
; 303: Development and Execute
;
;-----
[SetupType]
Type=303

```

```

;-----
;
;Please select Install Directory.
;-----
;
[InstallDirectory]
Path=C:\OPOS\TEC\

;-----
;
;Please select development you want to install.
;
;
; (Param)      (Mean)
;      1:      install the Develop Environment
;      0:      do not install the Develop Environment
;
; NOTE: Includes files will be installed only by change
;        SetupType include Development
;-----
;
[Develop Environment]
CashDrawer=1
POSPrinter=1

;-----
;
;Please select Drivers you want to install.
;
;
; (Param)      (Mean)
;      1:      install the driver
;      0:      do not install the driver
;
;-----
;
[Execute Environment]
;-----CashDrawer-----
;
;      DRWSO:  DRWST CashDrawer
;      DRWxU:  CashDrawer connected to TRSTAxU
;      DRWxS:  CashDrawer connected to TRSTAxS
;      DRWxP:  CashDrawer connected to TRSTAxP
;      DRWxL:  CashDrawer connected to TRSTAxL
DRWxU=1
DRWxS=1
DRWxP=1
DRWxL=1

;-----POSPrinter-----
;
;      TRSTAxU: TRSTAx USB POSPrinter
;      TRSTAxS: TRSTAx Serial POSPrinter
;      TRSTAxP: TRSTAx Parallel POSPrinter
;      TRSTAxL: TRSTAx LAN POSPrinter
TRSTAxU=1
TRSTAxS=1
TRSTAxP=1
TRSTAxL=1
TRSTC10BI=1

;-----
;
; Reboot is not required
;-----

```

### 3.3 Table of error codes

After installation, installer creates a log file ("setup.log"). Refer to [ResponseResult] → ResultCode to confirm the result of installation.

[ResponseResult] ResultCode=0
----------------------------------

This is a table of error codes.

Value	Mean
0	Success
-1	General error
-2	Mode is invalid
-3	Cannot find the necessary data. There are any errors in the response file.
-4	Insufficiency of Memory
-5	Cannot find the response file
-6	Cannot write to the response file
-7	Cannot write to the log file
-8	The path of response file is invalid
-9	Data format is invalid
-10	Data format is invalid
-11	Unknown error occurred
-12	Dialog order is wrong
-51	Cannot create the specific folder
-52	Cannot access the specific file or the specific folder
-53	Selected option is invalid

## 4. Default configured value for the OPOS Control

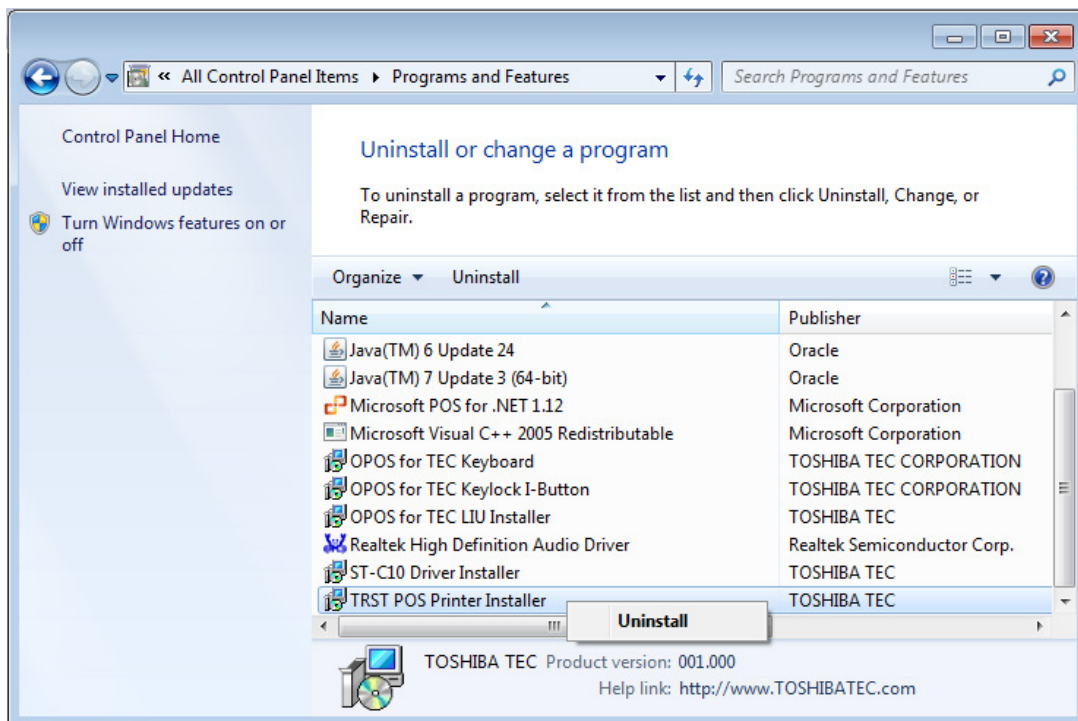
When OPOS Driver and OPOS Control are installed, the default communication port value are:

Device Class	Default Port
TRSTA1U Printer	USB
TRSTA1S Printer	COM1
TRSTA1L Printer	LAN
TRSTA1P Printer	LPT1
TRSTC10S Printer	COM4

## 5. Uninstallation

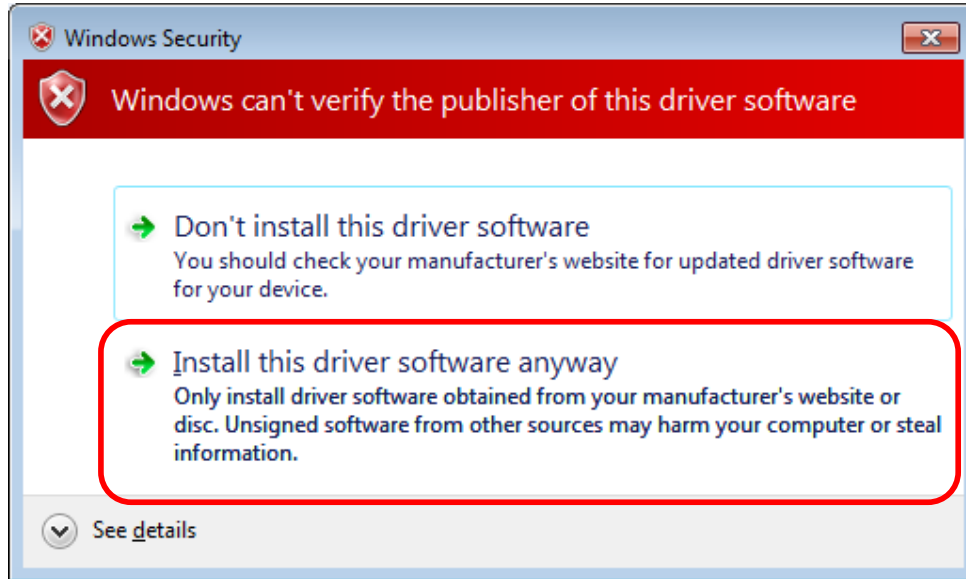
### 5.1 Starting the uninstallation

1. Open "Control Panel".
2. Open "Programs and Features" or "Add or Remove Programs" from the control panel respectively in Windows 7 and Windows XP.
3. Select "TRST POS Printer Installer", then select "Uninstall" from the right click menu for Windows 7, while Windows XP, press the "Remove" button.



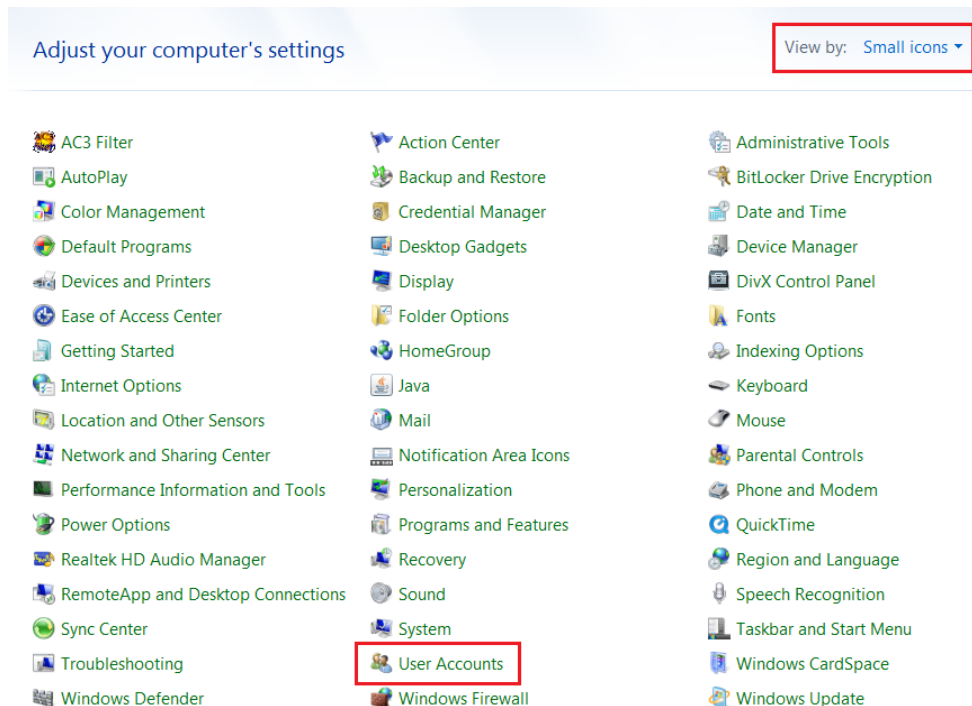
## 6. Restrictions

**NOTE1:** On Windows 7 (32-bit) and POSReady7 (32-bit), in order to complete the silent install, user needs to manually accept the Unsigned Driver Installation Dialog Prompt

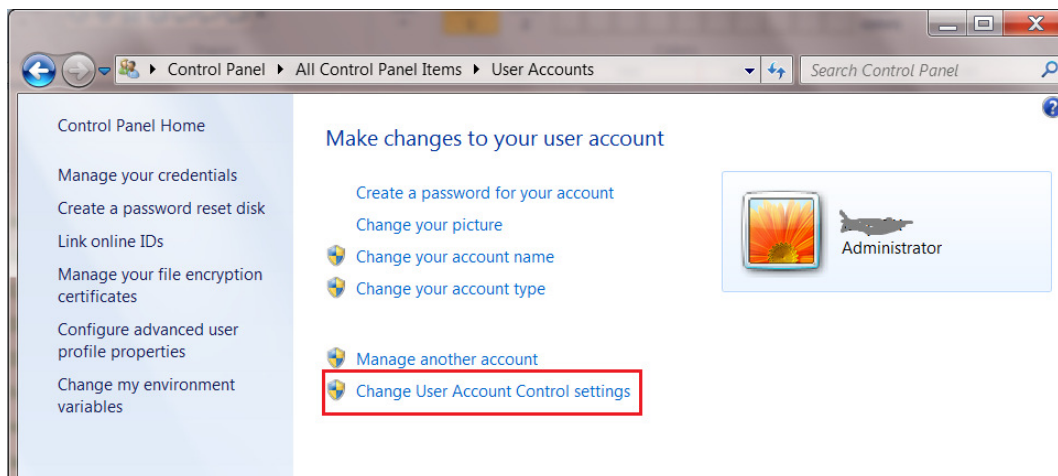


**NOTE2:** On newer version of windows (windows 7, POSReady 7), it is required to turn off the User Account Control in order to complete the installation.

1. Go to Control Panel, select View by: Small icons to display all features, then click User Accounts.



## 2. Click Change User Account Control Settings.



3. Move the slider to 'Never notify' position. Click 'OK'. A system reboot is required in order to make the UAC changes taking effect.

